

 **BOEING**  
COMPONENT  
MAINTENANCE MANUAL

TO: ALL HOLDERS OF OUTBOARD TRAILING EDGE FLAP NO. 2 FORWARD FAIRING ASSEMBLY  
COMPONENT MAINTENANCE MANUAL, 57-26-22

REVISION NO. 7 DATED NOV 01/02

HIGHLIGHTS

Pages which have been added or revised are outlined below together with the highlights of the revision. Remove and insert the affected pages as listed and enter Revision No. and date to the Record of Revision Sheet.

CHAPTER/SECTION

AND PAGE NO.

DESCRIPTION OF CHANGE

TITLE PAGE

Added top assemblies 113T1812-57, -58, -69G, and -70G.

1

TR & SB RECORD

1

REPAIR 3-1

601

1003-1011,1015-1029,

1035-1044

501

Clarified non-destructive testing in the Check section.

REPAIR 1-1

601

Changed the item numbers to agree with the Illustrated Parts List.

REPAIR 2-1

601-602

REPAIR 3-1

601-602

1014,1033

1002

Revised note about Boeing Proprietary color-coded parts with an alpha suffix.

**57-26-22**

HIGHLIGHTS

01.1

Page 1

Nov 01/02

OUTBOARD TRAILING EDGE FLAP NO. 2  
FORWARD FAIRING ASSEMBLY

PART NUMBER 113T1812-15SP,-16SP,-19,-20,  
-21SP,-22SP,-23,-24,  
-25SP,-26SP,-27 THRU  
-34,-51,-52,-57,-58,  
-69G,70G

COMPONENT MAINTENANCE MANUAL  
WITH  
ILLUSTRATED PARTS LIST

**57-26-22**

TITLE PAGE

Page 1

Nov 01/02

01.1



REVISION RECORD

- Retain this record in front of manual. On receipt of revision, insert revised pages in the manual, and enter revision number, date inserted and initial.

REVISION NUMBER	REVISION DATE	DATE FILED	BY	REVISION NUMBER	REVISION DATE	DATE FILED	BY

**57-26-22**

REVISION RECORD

01

Page 1

Jul 10/83



TEMPORARY REVISION AND SERVICE BULLETIN RECORD

BOEING SERVICE BULLETIN	BOEING TEMPORARY REVISION	OTHER DIRECTIVE	DATE OF INCORPORATION INTO MANUAL
		PRR B10450 PRR B11993 PRR B11382-2 PRR B11382-3 PRR B13100-2	JAN 10/85 APR 01/91 APR 01/92 APR 01/92 NOV 01/02

**57-26-22**

TR & SB RECORD

01.1

Page 1

Nov 01/02


**BOEING**  
 COMPONENT  
 MAINTENANCE MANUAL

PAGE	DATE	CODE	PAGE	DATE	CODE
57-26-22			REPAIR-GENERAL		
			601	JAN 10/84	01.1
			602	JUL 10/83	01
TITLE PAGE			REPAIR 1-1		
*1	NOV 01/02	01.1	*601	NOV 01/02	01.1
2	BLANK		602	BLANK	
REVISION RECORD			REPAIR 2-1		
1	JUL 10/83	01	*601	NOV 01/02	01.1
2	BLANK		*602	NOV 01/02	01.1
TR & SB RECORD			REPAIR 3-1		
*1	NOV 01/02	01.1	*601	NOV 01/02	01.1
2	BLANK		*602	NOV 01/02	01.1
LIST OF EFFECTIVE PAGES			ASSEMBLY		
*1	NOV 01/02	01	701	APR 01/91	01.1
THRU LAST PAGE			702	BLANK	
CONTENTS			ILLUSTRATED PARTS LIST		
1	JAN 10/85	01.1	1001	JUL 10/83	01
2	BLANK		*1002	NOV 01/02	01.1
INTRODUCTION			*1003	NOV 01/02	01.1
1	JUL 10/83	01	*1004	NOV 01/02	01.1
2	BLANK		*1005	NOV 01/02	01.1
DESCRIPTION & OPERATION			*1006	NOV 01/02	01.1
1	JUL 10/83	01	*1007	NOV 01/02	01.1
2	BLANK		*1008	NOV 01/02	01.1
DISASSEMBLY			*1009	NOV 01/02	01.1
301	JAN 10/84	01.1	*1010	NOV 01/02	01.1
302	BLANK		*1011	NOV 01/02	01.1
CLEANING			*1012	NOV 01/02	01.1
401	APR 01/91	01.1	*1013	NOV 01/02	01.1
402	BLANK		*1014	NOV 01/02	01.1
CHECK			*1015	NOV 01/02	01.1
*501	NOV 01/02	01.1	*1016	NOV 01/02	01.1
502	BLANK		*1017	NOV 01/02	01.1
			*1018	NOV 01/02	01.1
			*1019	NOV 01/02	01.1
			*1020	NOV 01/02	01.1
			*1021	NOV 01/02	01.1
			*1022	NOV 01/02	01.1

\* = REVISED, ADDED OR DELETED

**57-26-22**

EFFECTIVE PAGES

CONTINUED Page 1

01 Nov 01/02

PAGE	DATE	CODE	PAGE	DATE	CODE
ILLUSTRATED PARTS LIST		CONT.			
*1023	NOV 01/02	01.1			
*1024	NOV 01/02	01.1			
*1025	NOV 01/02	01.1			
*1026	NOV 01/02	01.1			
*1027	NOV 01/02	01.1			
*1028	NOV 01/02	01.1			
*1029	NOV 01/02	01.1			
*1030	BLANK				
*1031	NOV 01/02	01.1			
*1032	NOV 01/02	01.1			
*1033	NOV 01/02	01.1			
*1034	NOV 01/02	01.1			
*1035	NOV 01/02	01.1			
*1036	NOV 01/02	01.1			
*1037	NOV 01/02	01.1			
*1038	NOV 01/02	01.1			
*1039	NOV 01/02	01.1			
*1040	NOV 01/02	01.1			
*1041	NOV 01/02	01.1			
*1042	NOV 01/02	01.1			
*1043	NOV 01/02	01.1			
*1044	NOV 01/02	01.1			

\* = REVISED, ADDED OR DELETED

**57-26-22**

EFFECTIVE PAGES  
 LAST PAGE Page 2  
 01 Nov 01/02

TABLE OF CONTENTS

<u>Paragraph Title</u>	<u>Page</u>
Description and Operation. . . . .	1
Testing and Trouble Shooting (Not Applicable)	
Disassembly. . . . .	301
Cleaning . . . . .	401
Check. . . . .	501
Repair . . . . .	601
Assembly . . . . .	701
Fits and Clearances (Not Applicable)	
Special Tools (Not Applicable)	
Illustrated Parts List . . . . .	1001

**57-26-22**

CONTENTS

Page 1

Jan 10/85

01.1



## INTRODUCTION

The instructions in this manual provide the information necessary to perform maintenance functions ranging from simple checks and replacement to complete shop-type repair.

This manual is divided into separate sections:

- |  |                              |
|--|------------------------------|
| 1. Title Page                                      | 4. List of Effective Pages   |
| 2. Record of Revisions                             | 5. Table of Contents         |
| 3. Temporary Revision &<br>Service Bulletin Record | 6. Introduction              |
|  | 7. Procedures & IPL Sections |

Refer to the Table of Contents for the page location of applicable sections. An asterisked flagnote \*[ ] in place of the page number indicates that no special instructions are provided since the function can be performed using standard industry practices.

The beginning of the REPAIR section includes a list of the separate repairs, a list of applicable standard Boeing practices, and an explanation of the True Position Dimensioning symbols used.

An explanation of the use of the Illustrated Parts List is provided in the Introduction to that section.

All weights and measurements used in the manual are in English units, unless otherwise stated. When metric equivalents are given they will be in parentheses following the English units.

Design changes, optional parts, configuration differences and Service Bulletin modifications create alternate part numbers. These are identified in the Illustrated Parts List (IPL) by adding an alphabetical character to the basic item number. The resulting item number is called an alpha-variant. Throughout the manual, IPL basic item number references also apply to alpha-variants unless otherwise indicated.

**57-26-22**

INTRODUCTION

01

Page 1

Jul 10/83





OUTBOARD TRAILING EDGE FLAP NO. 2 FORWARD FAIRING ASSEMBLY

DESCRIPTION AND OPERATION

1. Description and Operation

A. The No. 2 forward fairing assembly is an aerodynamic cover for the tracking mechanism of the outboard flap. The fairing is supported by two bulkheads which secure the fairing to the wing. Two hinged fitting assemblies on the rear bulkhead attach the forward fairing to the mid fairing.

2. Leading Particulars (Approximate)

Width -- 22 inches  
Length -- 34 inches  
Height -- 10 inches  
Weight -- 12 pounds

57-26-22

DESCRIPTION & OPERATION

01

Page 1

Jul 10/83



DISASSEMBLY

1. Disassemble this component only as necessary to complete fault isolation, determine the servicability of parts, perform required repairs and restore the unit to servicable condition.

**57-26-22**

DISASSEMBLY

01.1

Page 301

Jan 10/84

**BOEING**  
COMPONENT  
MAINTENANCE MANUALCLEANING

CAUTION: DO NOT VAPOR DEGREASE GRAPHITE/ARAMID EPOXY STRUCTURES WITH CHLORINATED CLEANING AGENTS SUCH AS METHYLENE CHLORIDE, TRICHLOROETHYLENE, AND TRICHLOROETHANE. CHLORINATED CLEANING AGENTS WILL CAUSE DAMAGE TO GRAPHITE/ARAMID EPOXY STRUCTURES.

1,1,1-TRICHLOROETHANE IS ONE OF THE SOLVENTS ALLOWED FOR CLEANING COMPOSITE COMPONENTS. DO NOT SUBMERGE PARTS IN THE SOLVENT OR ALLOW STANDING SOLVENT ON THE PARTS OR DAMAGE MAY OCCUR. USE 1,1,1-TRICHLOROETHANE ONLY AS A WIPE SOLVENT.

1. Clean all parts in accordance with standard industry practices (Ref 20-30-03) except for the following graphite/aramid epoxy structures.

| A. Bond Assy (260, 265, Fig. 1) (285, 290, Fig. 2)

**57-26-22**CLEANING  
Page 401  
Apr 01/91

01.1

**BOEING**  
COMPONENT  
MAINTENANCE MANUALCHECK

1. Do a visual check for any obvious damage on all visible parts according to standard industry practices. Do the penetrant check if cracks or damage are seen or if you think there are cracks or damage.
  - A. Penetrant examine per 20-20-02 -- Bathtub fitting (105, IPL Fig. 1), (110, IPL Fig. 2) hinge fittings (180, 182, 185, 187, 188, 189, IPL Fig. 1), (185, 190, 195, 200, IPL Fig. 2), grounding clip (205, IPL Fig. 1), (225, IPL Fig. 2), bulkheads (255, 257, 260, IPL Fig. 1), (275, 280, IPL Fig. 2).
2. Check honeycomb and bonded parts for evidence of delamination, internal water, scratches, and contour defects.
  - A. If you see delamination or impact damage on a visual check, do an ultrasonic inspection or a tap test to find all of the damage.

NOTE: For the tap test, use a solid metal disk and tap the surface area lightly but firmly. Void areas will produce a dull sound as opposed to a sharp ring on a solid bonded area. Refer to 767 Nondestructive Test Manual, Part 1, 51-05-01.
  - B. Examine areas suspected of containing water radiographically or by thermography as shown in 767 Nondestructive Test Manual, Part 9, 51-00-01.
3. Refer to 767 Structural Repair Manual, 57-53-70, for allowable damage data.

**57-26-22**

CHECK

01.1

Page 501

Nov 01/02

REPAIR – GENERAL1. Content

- A. Repair, refinish and replacement procedures are included in separate repair sections as follows:

<u>P/N</u>	<u>NAME</u>	<u>REPAIR</u>
113T1831	HINGE FITTING ASSEMBLY	1-1
113T1865	BULKHEAD ASSEMBLY	2-1
- -	MISCELLANEOUS PARTS	3-1

2. Standard Practices

- A. Refer to the following standard practices overhaul manuals, as applicable, for details of procedures in individual repairs.

20-30-02 Stripping of Protective Finishes  
 20-30-03 General Cleaning Procedures  
 20-41-01 Decoding Table for Boeing Finish Codes  
 20-41-02 Application of Chemical and Solvent Resistant Finishes  
 20-43-01 Chromic Acid Anodizing  
 20-50-03 Bearing Installation and Retention

3. Materials

NOTE: Equivalent substitutes may be used.

- A. Enamel -- BMS 10-60, BAC707 gray gloss (Ref 20-60-02)  
 -- BMS 10-60, Type 2 gloss according to operator's standard color scheme (Ref 20-60-02)
- B. Primer -- BMS 10-11, Type 1 (Ref 20-60-02)  
 -- BMS 10-79, Type 2 (Ref 20-60-02)
- C. Sealant -- BMS 5-95 (Ref 20-60-04)

57-26-22

REPAIR-GENERAL

01.1

Page 601

Jan 10/84

4. Dimensioning Symbols

A. Standard True Position Dimensioning Symbols used in applicable repair procedures are shown in Fig. 601.

—	STRAIGHTNESS	$\oplus$	THEORETICAL EXACT POSITION OF A FEATURE (TRUE POSITION)
$\square$	FLATNESS	$\varnothing$	DIAMETER
$\perp$	PERPENDICULARITY (OR SQUARENESS)	BASIC (BSC) OR	A THEORETICALLY EXACT DIMENSION USED TO DESCRIBE SIZE, SHAPE OR LOCATION OF A FEATURE FROM WHICH PERMISSIBLE VARIATIONS ARE ESTABLISHED BY TOLERANCES ON OTHER DIMENSIONS OR NOTES.
//	PARALLELISM	<b>DIM</b>	
$\bigcirc$	ROUNDNESS	<b>-A-</b>	DATUM
$\bigcirc$	CYLINDRICITY	$\textcircled{M}$	MAXIMUM MATERIAL CONDITION (MMC)
$\frown$	PROFILE OF A LINE	$\textcircled{S}$	REGARDLESS OF FEATURE SIZE (RFS)
$\triangle$	PROFILE OF A SURFACE	$\textcircled{P}$	PROJECTED TOLERANCE ZONE
$\odot$	CONCENTRICITY		
$\equiv$	SYMMETRY		
$\sphericalangle$	ANGULARITY		
$\nearrow$	RUNOUT		

EXAMPLES

$\text{—} \quad 0.002$	STRAIGHT WITHIN 0.002	$\textcircled{\odot} \text{ C } \varnothing \quad 0.0005$	CONCENTRIC TO C WITHIN 0.0005 DIAMETER (FULL INDICATOR MOVEMENT)
$\perp \text{ B } \quad 0.002$	PERPENDICULAR TO B WITHIN 0.002	$\equiv \text{ A } \quad 0.010$	SYMMETRICAL WITH A WITHIN 0.010
$\parallel \text{ A } \quad 0.002$	PARALLEL TO A WITHIN 0.002	$\sphericalangle \text{ A } \quad 0.005$	ANGULAR TOLERANCE 0.005 WITH A
$\bigcirc \quad 0.002$	ROUND WITHIN 0.002	$\oplus \text{ B } \varnothing \quad 0.002 \textcircled{S}$	LOCATED AT TRUE POSITION WITHIN 0.002 DIA IN RELATION TO DATUM B, REGARDLESS OF FEATURE SIZE
$\bigcirc \quad 0.010$	CYLINDRICAL SURFACE MUST LIE BETWEEN TWO CONCENTRIC CYLINDERS, ONE OF WHICH HAS A RADIUS 0.010 INCH GREATER THAN THE OTHER	$\perp \text{ A } \varnothing \quad 0.010 \textcircled{M}$ $0.510 \textcircled{P}$	AXIS IS TOTALLY WITHIN A CYLINDER OF 0.010-INCH DIAMETER, PERPENDICULAR TO, AND EXTENDING 0.510-INCH ABOVE, DATUM A, MAXIMUM MATERIAL CONDITION
$\frown \text{ A } \quad 0.006$	EACH LINE ELEMENT OF THE SURFACE AT ANY CROSS SECTION MUST LIE BETWEEN TWO PROFILE BOUNDARIES 0.006 INCH APART IN RELATION TO DATUM PLANE A	$2.000$	EXACT DIMENSION IS 2.000
$\triangle \text{ A } \quad 0.020$	SURFACES MUST LIE WITHIN PARALLEL BOUNDARIES 0.02 INCH APART AND EQUALLY DISPOSED ABOUT TRUE PROFILE	OR $2.000$ BSC	

True Position Dimensioning Symbols  
Figure 601

**57-26-22**

REPAIR-GENERAL

01 Page 602

Jul 10/83

HINGE FITTING ASSEMBLY – REPAIR 1-1

113T1831-5 thru -8 and -21 thru -24

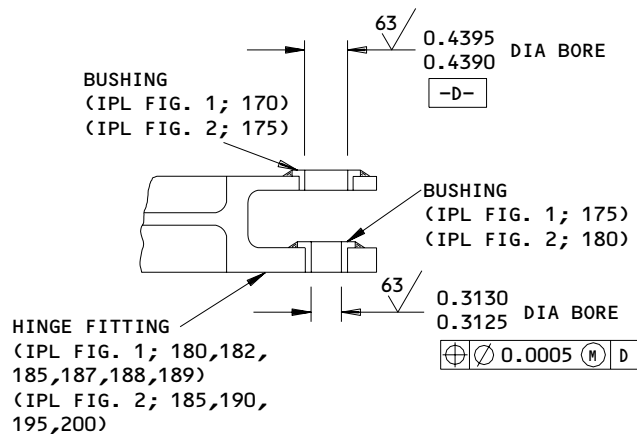
**NOTE:** Refer to REPAIR – GENERAL for a list of applicable standard practices.

**1. Bushing Replacement** (170, 175, IPL Fig. 1) (175, 180, IPL Fig. 2)

- A. Remove bushings.
- B. Install bushings per 20-50-03 except use wet BMS 5-95 sealant.
- C. Machine bushings as shown in Fig. 601.
- D. Fillet seal entire periphery of bushing flanges with BMS 5-95 sealant.

**2. Refinish**

- A. Hinge fittings (180, 182, 185, 187, 188, 189, IPL Fig. 1), (185, 190, 195, 200, IPL Fig. 2) -- Chromic acid anodize, type 1, and apply one coat BMS 10-11, type 1 primer, omitting primer in holes (F-18.13). Apply BMS 10-60 Boeing color 707 gray gloss enamel (SRF-14.9814) per BAC 5845, omitting finish in holes. Material: Aluminum alloy.



ALL DIMENSIONS ARE IN INCHES

Hinge Fitting Repair  
Figure 601

**57-26-22**

REPAIR 1-1

01.1

Page 601

Nov 01/02

BULKHEAD ASSEMBLY - REPAIR 2-1

113T1865-1, -2, -5, -6

**NOTE:** Refer to REPAIR - GENERAL for a list of applicable standard practices.

1. Bushing Replacement (240, 246, 247, 250A, IPL Fig. 1) (260, 266, 267, 270A, IPL Fig. 2)
  - A. Remove bushings.
  - B. Install bushings per 20-50-03 except use wet BMS 5-95 sealant.
  - C. Machine bushings as shown in Fig. 601.
  - D. Fillet seal entire periphery of bushing flanges with BMS 5-95, class B sealant.
2. Refinish
  - A. Bulkhead (255, 257, 260, IPL Fig. 1), (275, 280, IPL Fig. 2) -- Chromic acid anodize, type 1, and apply one coat BMS 10-11, type 1 primer, omitting primer in holes (F-18.13). Material: Aluminum alloy.
  - B. Bulkhead Assy (220, 223, 225, 227, IPL Fig. 1), (240, 245, IPL Fig. 2) -- Apply enamel, BMS 10-60, color BAC707 gray gloss (SRF 14.9813); omit enamel from bushing bores and flanges.  
Material: Aluminum alloy

**57-26-22**

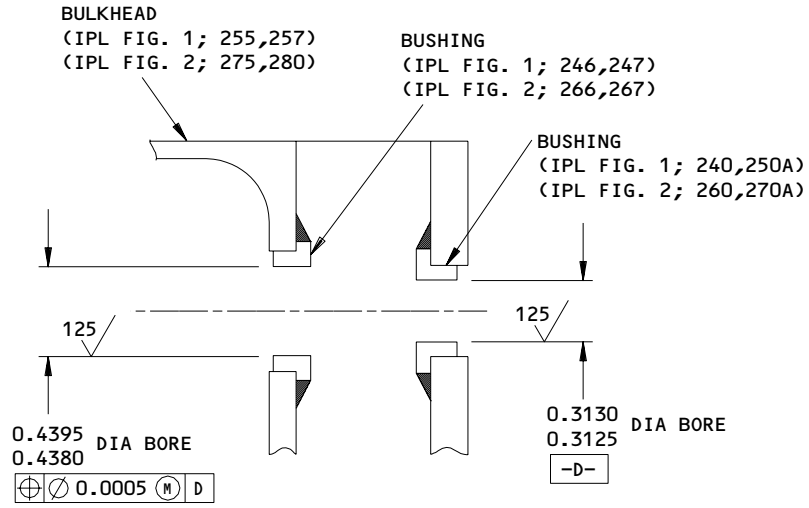
REPAIR 2-1

01.1

Page 601

Nov 01/02





Bulkhead Repair  
 Figure 601

7128

**57-26-22**

REPAIR 2-1

01.1

Page 602

Nov 01/02


**BOEING**  
 COMPONENT  
 MAINTENANCE MANUAL
MISCELLANEOUS PARTS - REPAIR 3-1

1. Repair of parts listed in Fig. 601 consists of restoration of the original finish.

NOTE: Refer to REPAIR - GENERAL for a list of applicable standard practices.

IPL FIG. & ITEM	MATERIAL	FINISH
<u>Fig. 1</u>		
Fairing assembly (1A thru 1M, 5A thru 5M, IPL Fig. 1) (1 thru 1J, 5 thru 5J, IPL Fig. 2)		Apply one coat BMS 10-79, Type 2 primer and BMS 10-60, Type 2 gloss enamel on exterior surface and trimmed edges according to operator's standard color scheme (F-19.41-XXX).
Retainers (30, 35, 45, 50, IPL Fig. 1) 30, 31, 33, 34, 35, 36, 38, 39, IPL Fig. 2)	Al alloy	Chromic acid anodize, type 1, and apply one coat BMS 10-11, Type 1 primer (F-18.13). Apply BMS 10-60 BAC707 gray gloss enamel (SRF-14.9813).
Bathtub fitting (105, IPL Fig. 1) (110, IPL Fig. 2)	Al alloy	Chromic acid anodize, type 1, and apply one coat BMS 10-11, Type 1 primer (F-18.13).
Bulkhead (110, 115, IPL Fig. 1)(130, 135, IPL Fig. 2)	Al alloy	Chemical treat surface, colored coating. Apply one coat BMS 10-11, Type 1 primer (F-18.06). Apply BMS 10-60 gloss enamel, BAC707 gray (SRF-14.9813).

Refinish Details  
Figure 601 (Sheet 1)

**57-26-22**

REPAIR 3-1

01.1

Page 601

Nov 01/02

IPL FIG. & ITEM	MATERIAL	FINISH
<u>Fig. 1</u> (cont)		
Grounding clip (205, IPL Fig. 1) (225, IPL Fig. 2)	Al alloy	Chromic acid anodize, type 1, or boric acid-sulfuric acid anodize (F-17.31) and apply one coat BMS 10-11, Type 1 primer (F-20.02), and apply BMS 10-60, Type 1 gloss enamel, BAC707 gray (F-14.9813).
Access door (210, 215, IPL Fig. 1) (230,235, IPL Fig. 2)	Al alloy	Chemical treat all surfaces, colored film (F-17.07). Apply one coat BMS 10-11, Type 1 primer (F-20.02) on the interior surface. Apply one coat BMS 10-79, Type 2 primer (F-19.46) on exterior surface.
Hinge Fitting (180,182,185,187, 188,189, IPL Fig. 1)(185,190, 195,200, IPL Fig. 2)	Al alloy	Chromic acid anodize, type 1, and apply one coat BMS 10-11, Type 1 primer (F-18.13). Apply BMS 10-60 color 707 gray gloss enamel except omit primer and enamel from holes.
Bulkhead (255,257, IPL Fig. 1) (275,280, IPL Fig. 2)	Al alloy	Chromic acid anodize, type 1, and apply one coat BMS 10-11, Type 1 primer (F-18.13) except omit primer in holes.

Refinish Details  
 Figure 601 (Sheet 2)

**57-26-22**

REPAIR 3-1

01.1

Page 602

Nov 01/02

ASSEMBLY| 1. Assembly (IPL, Fig. 1, Fig. 2)

- A. Use standard industry practices for assembly of this unit, with additional procedures listed below.
- | B. Install blind rivets (125, 235, IPL Fig. 1), (120, 255, IPL Fig. 2) and check that resistance is less than 0.001 ohm per 20-11-03. Test conductive coating per 20-10-06.
- | C. Install bonding jumper (55, IPL Fig. 1), (75, IPL Fig. 2) and check that resistance is less than 0.010 ohm per 20-11-03.

**57-26-22**ASSEMBLY  
Page 701  
Apr 01/91

01.1



ILLUSTRATED PARTS LIST

1. This section lists and illustrates replaceable or repairable component parts. The Illustrated Parts Catalog contains a complete explanation of the Boeing part numbering system.
2. Indentures show parts relationships as follows:

Assembly

Detail Parts for Assembly

Subassembly

Attaching Parts for Subassembly

Detail Parts for Subassembly

Detail Installation Parts (Included only if installation parts may be returned to shop as part of assembly)

3. One use code letter (A, B, C, etc.) is assigned in the EFF CODE column for each variation of top assembly. All listed parts are used on all top assemblies except when limitations are shown by use code letter opposite individual part entries.
4. Letter suffixes (alpha-variants) are added to item numbers for optional parts, Service Bulletin modification parts, configuration differences (except left- and right-hand parts), product improvement parts, and parts added between two sequential item numbers. The alpha-variant is not shown on illustrations when appearance and location of all variants of the part is the same.
5. Service Bulletin modifications are shown by the notations PRE SB XXXX and POST SB XXXX.
  - A. When a new top assembly part number is assigned by Service Bulletin, the notations appear at the top assembly level only. The configuration differences at detail part level are then shown by use code letter.
  - B. When the top assembly part number is not changed by the Service Bulletin, the notations appear at the detail part level.

6. Parts Interchangeability

Optional  
(OPT)

The parts are optional to and interchangeable with other parts having the same item number.

Supersedes, Superseded By  
(SUPSDS, SUPSD BY)

The part supersedes and is not interchangeable with the original part.

Replaces, Replaced By  
(REPLS, REPLD BY)

The part replaces and is interchangeable with, or is an alternate to, the original part.

**57-26-22**

ILLUSTRATED PARTS LIST

01 Page 1001

Jul 10/83

7. Boeing Proprietary Color-Coded Parts

- A. Color-coded parts are identified with an alpha suffix. These entries represent parts that are of the same configuration, but have different finishes. Orders for color-coded parts should include the registry number of the airplane for which the parts are ordered.

**57-26-22**

ILLUSTRATED PARTS LIST  
01.1 Page 1002  
Nov 01/02


**BOEING**  
 COMPONENT  
 MAINTENANCE MANUAL
VENDORS

08524 DEUTSCH FASTENER CORP SEE CODE V97928

10630 ANILLO INDUSTRIES, INCORPORATED  
 2090 NORTH GLASSELL  
 ORANGE, CALIFORNIA 92667  
 FORMERLY WESTERN WASHER DIV OF SENG CO V87487

15653 FAIRCHILD FASTENERS KAYNAR PRODUCTS DIV  
 800 S STATE COLLEGE BLVD  
 FULLERTON, CALIFORNIA 92831-3001  
 FORMERLY VK6405 MICRODOT AEROSP LTD; FORMERLY KAYNAR TECH  
 KAYNAR DIV

5M902 FAIRCHILD IND INC FAIRCHILD AEROSPACE FASTENER DIV  
 3016 W LOMITA BLVD  
 TORRANCE, CALIFORNIA 90505-5103  
 FMLY IN REDONDO BEACH, CALIF

52825 HOFFMAN CAMERA CORP  
 19 GRAND AVENUE  
 FARMINGTON, NEW YORK 11735-6315

52828 REPUBLIC FASTENER MFG CORP  
 1300 RANCHO CONEJO BLVD  
 NEWBURY PARK, CALIFORNIA 91320-1405  
 FORMERLY IN SYLMAR, CALIFORNIA

56878 SPS TECHNOLOGIES INC AEROSPACE AND INDUSTRIAL PRODUCTS DIV  
 HIGHLAND AVENUE  
 JENKINTOWN, PENNSYLVANIA 19046  
 FORMERLY STANDARD PRESSED STEEL

60516 WEST COAST AEROSPACE INC  
 812 MIRAFLORES STREET  
 SAN PEDRO, CALIFORNIA 90731-1439

71087 BOOTS ACFT NUT DIV TOWNSEND CO SEE TEXTRON INC CHERRY  
 FASTENER TOWNSEND DIV V11815

72962 HARVARD INDUSTRIES INC  
 3 WERNER WAY SUITE 210  
 LEBANON, NEW JERSEY 08833  
 FORMERLY AMERACE CORP ESNA DIV  
 FORMERLY ELASTIC STOP NUT IN UNION, NJ

73197 HI-SHEAR TECHNOLOGY CORP  
 2600 SKYPARK DRIVE  
 TORRANCE, CALIFORNIA 90509

57-26-22

 ILLUSTRATED PARTS LIST  
 01.1 Page 1003  
 Nov 01/02

VENDORS

80539 SPS TECHNOLOGIES INC AEROSPACE PRODUCTS DIV  
2701 SOUTH HARBOR BOULEVARD PO BOX 1259  
SANTA ANA, CALIFORNIA 92702-1259  
FORMERLY NUTT-SHEL DIV OF SPC WESTERN CO V80539  
AND STANDARD PRESSED STEEL WESTERN DIV V17279

9N513 VOI SHAN/CHATSWORTH DIV OF VSI CORP SUB OF FAIRCHILD IND  
CHATSWORTH, CALIFORNIA 91311-5013  
COMPANY NO LONGER WISHES TO BE CONSIDERED FOR FED CONTRCTG

92215 FAIRCHILD IND INC FAIRCHILD AEROSPACE FASTENER DIV  
3010 W LOMITA BLVD  
TORRANCE, CALIFORNIA 90505-5102  
FORMERLY VOI-SHAN IN CULVER CITY, CALIF

97928 HUCK INTL INC  
3969 PARAMOUNT BLVD  
LAKEWOOD, CALIFORNIA 90712-4193

**57-26-22**

ILLUSTRATED PARTS LIST  
01.1 Page 1004  
Nov 01/02




**BOEING**  
 COMPONENT  
 MAINTENANCE MANUAL

PART NUMBER	AIRLINE PART NO.	FIG.	ITEM	TTL REQ
AN960-10L		1	70	6
		2	70	6
AN960PD8		1	90	2
		2	95	2
AN960XC10L		1	15	37
		2	15	37
AS46-4		1	166	8
BACB28AA5C028		1	240	1
		2	260	1
BACB28AM07B013A		1	170	4
		2	175	2
BACB28AP05P015		1	250A	1
		2	270A	1
BACB28AP05P023		1	175	4
		2	180	2
BACB28AT07B012C		1	246	1
		2	266	1
BACB28AT07B020C		1	247	1
		2	267	1
BACB30LR3-3		1	217	7
		2	210	7
BACB30LR3-4		1	219	1
		2	212	1
BACB30MB6A4		1	60	2
		2	60	2
BACB30MY8K6		1	155A	4
		2	160	4
BACB30MY8K7		1	160A	4
		2	165	4
BACB30NN3K2		1	10A	37
		2	10A	37
BACC30AGB		2	170	8
BACC30AG8		1	165A	8
BACC30X6		1	65	2
		2	65	2
BACF3F014J020NN		1	100	4
		2	105	2
BACJ40A20-5		1	55	1
		2	75	1
BACN10JC08		1	95	2
		2	100	2
BACN10JC3		1	20	37
		2	20	37
BACN10KE3B2		1	190	8
BACN10KE3B2		2	220	8
BACN10MT4		1	166M	8

57-26-22

 ILLUSTRATED PARTS LIST  
 01.1 Page 1005  
 Nov 01/02

PART NUMBER	AIRLINE PART NO.	FIG.	ITEM	TTL REQ
BACR15BA3AD		1	200	16
		2	215	16
BACR15BA6AD		1	120	8
		1	230	17
		2	115	8
		2	250	17
BACR15FT8AD		1	130	2
		2	125	2
BACR15FT8KE		1	80	2
		2	85	2
BACS12ER08K12		1	85	2
		2	90	2
BACS40R30B37F		1	189M	2
		2	205	2
BACW10AU4		1	166	8
BRFR220A3-2		1	190	8
		2	220	8
BRH10A08		1	95	2
		2	100	2
BRH10A3		1	20	37
		2	20	37
B30MY8K6		1	155A	4
		2	160	4
B30MY8K7		1	160A	4
		2	165	4
F51750-3-2		1	190	8
		2	220	8
HL10VAZ8-6		1	155A	4
		2	160	4
HL10VAZ8-7		1	160A	4
		2	165	4
HL1187-6		1	65	2
		2	65	2
HL448UC6-4		1	60	2
		2	60	2
HL82-8APBW		1	165A	8
HL87-6		1	65	2
		2	65	2
H10-08BAC		1	95	2
		2	100	2
H10-3BAC		1	20	37
		2	20	37
H19700P4		1	166M	8
NAS1399MW6-4		1	125	2
		1	235	2
		2	120	2
		2	255	2

57-26-22

 ILLUSTRATED PARTS LIST  
 01.1 Page 1006  
 Nov 01/02


**BOEING**  
 COMPONENT  
 MAINTENANCE MANUAL

PART NUMBER	AIRLINE PART NO.	FIG.	ITEM	TTL REQ
NS103191-02-2		1	190	8
		2	220	8
NS202101-02		1	20	37
		2	20	37
NS202101-82		1	95	2
		2	100	2
RMF9213-2-3		1	190	8
		2	220	8
RMLH9075-3W		1	20	37
		2	20	37
RMLH9075-82W		1	95	2
TLN1020-4N		2	100	2
		1	166M	8
T6S1032J		1	20	37
		2	20	37
T6S832J		1	95	2
		2	100	2
VN303A02		1	20	37
		2	20	37
VN303A82		1	95	2
		2	100	2
WC4486-4		1	60	2
		2	60	2
113T1803-1		1	205	1
		2	225	1
113T1812-10		1	50	1
		2	55	1
113T1812-11		1	43	1
		2	45	1
113T1812-15SP		1	1A	RF
113T1812-16SP		1	5A	RF
113T1812-17		1	167	4
113T1812-18		1	168	4
113T1812-19		1	1B	RF
113T1812-20		1	5B	RF
113T1812-21SP		1	1C	RF
		2	1	RF
113T1812-22SP		1	5C	RF
		2	5	RF
113T1812-23		1	1D	RF
		2	1A	RF
113T1812-24		1	5D	RF
		2	5A	RF
113T1812-25SP		1	1E	RF
		2	1B	RF

57-26-22

 ILLUSTRATED PARTS LIST  
 01.1 Page 1007  
 Nov 01/02

PART NUMBER	AIRLINE PART NO.	FIG.	ITEM	TTL REQ
113T1812-26SP		1	5E	RF
		2	5B	RF
113T1812-27		1	1F	RF
		2	1C	RF
113T1812-28		1	5F	RF
		2	5C	RF
113T1812-29		1	1G	RF
		2	1D	RF
113T1812-3		1	110	1
		2	130	1
113T1812-30		1	5G	RF
		2	5D	RF
113T1812-31		1	1H	RF
		2	1E	RF
113T1812-32		1	5H	RF
		2	5E	RF
113T1812-33		1	1J	RF
		2	1F	RF
113T1812-34		1	5J	RF
		2	5F	RF
113T1812-35		2	26	1
113T1812-37		2	31	1
113T1812-38		2	36	1
113T1812-39		2	28	1
113T1812-4		1	115	1
		2	135	1
113T1812-40		2	29	1
113T1812-41		2	34	1
113T1812-42		2	39	1
113T1812-43		2	33	1
113T1812-44		2	38	1
113T1812-45		2	27	1
113T1812-47		2	50A	1
113T1812-48		2	55A	1
113T1812-49		2	40A	1
113T1812-5		1	25	1
		2	25	1
113T1812-50		2	45A	1
113T1812-5001		1	7	1
113T1812-5002		1	9	1
113T1812-5003		1	7A	1
113T1812-5004		1	9A	1
113T1812-5005		1	7B	1

**57-26-22**

 ILLUSTRATED PARTS LIST  
 01.1 Page 1008  
 Nov 01/02


**BOEING**  
 COMPONENT  
 MAINTENANCE MANUAL

PART NUMBER	AIRLINE PART NO.	FIG.	ITEM	TTL REQ
113T1812-5006		1	9B	1
113T1812-51		1	1K	RF
		2	1G	RF
113T1812-52		1	5K	RF
		2	5G	RF
113T1812-53		2	28A	1
113T1812-54		2	29A	1
113T1812-55		2	26A	1
113T1812-56		2	26H	1
113T1812-57		1	1L	RF
		2	1H	RF
113T1812-58		1	5L	RF
		2	5H	RF
113T1812-6		1	40	1
		2	40	1
113T1812-63		2	34A	1
113T1812-64		2	39A	1
113T1812-65		2	31A	1
113T1812-66		2	36A	1
113T1812-67		2	27A	1
113T1812-68		2	27L	1
113T1812-69G		1	1M	RF
		2	1J	RF
113T1812-7		1	30	1
		2	30	1
113T1812-70G		1	5M	RF
		2	5J	RF
113T1812-8		1	35	1
		2	35	1
113T1812-9		1	45	1
		2	50	1
113T1813-5		1	210	1
		2	230	1
113T1813-6		1	215	1
		2	235	1
113T1817-1		1	75	1
		2	80	1
113T1817-4		1	105	1
		2	110	1
113T1831-13		1	180	1
113T1831-14		1	182	1
113T1831-15		1	185	1
113T1831-16		1	187	1
113T1831-21		1	151	1
		2	140	1

57-26-22

ILLUSTRATED PARTS LIST

01.1

Page 1009

Nov 01/02

PART NUMBER	AIRLINE PART NO.	FIG.	ITEM	TTL REQ
113T1831-22		1	151G	1
		2	145	1
113T1831-23		1	153	1
		2	150	1
113T1831-24		1	153G	1
113T1831-24		2	155	1
113T1831-29		1	188	1
		2	185	1
113T1831-30		1	188G	1
		2	190	1
113T1831-31		1	189	1
		2	195	1
113T1831-32		1	189G	1
		2	200	1
113T1831-5		1	135	1
113T1831-6		1	140	1
113T1831-7		1	145	1
113T1831-8		1	150	1
113T1852-1		1	260	1
		2	285	1
113T1852-2		1	265	1
		2	290	1
113T1865-1		1	220	1
		1	223A	1
		2	240A	1
113T1865-2		1	225	1
		1	227A	1
		2	245A	1
113T1865-3		1	255	1
113T1865-4		1	257	1
113T1865-5		1	220A	1
		1	223	1
		2	240	1
113T1865-6		1	225A	1
		1	227	1
		2	245	1
113T1865-7		1	255A	1
		2	275	1
113T1865-8		1	257A	1
		2	280	1
52LH6073-048		1	166M	8

# 57-26-22

 ILLUSTRATED PARTS LIST  
 01.1 Page 1010  
 Nov 01/02


**BOEING**  
 COMPONENT  
 MAINTENANCE MANUAL

PART NUMBER	AIRLINE PART NO.	FIG.	ITEM	TTL REQ
69308-6A4		1	60	2
		2	60	2
96-02		1	20	37
		2	20	37
96-82		1	95	2
		2	100	2

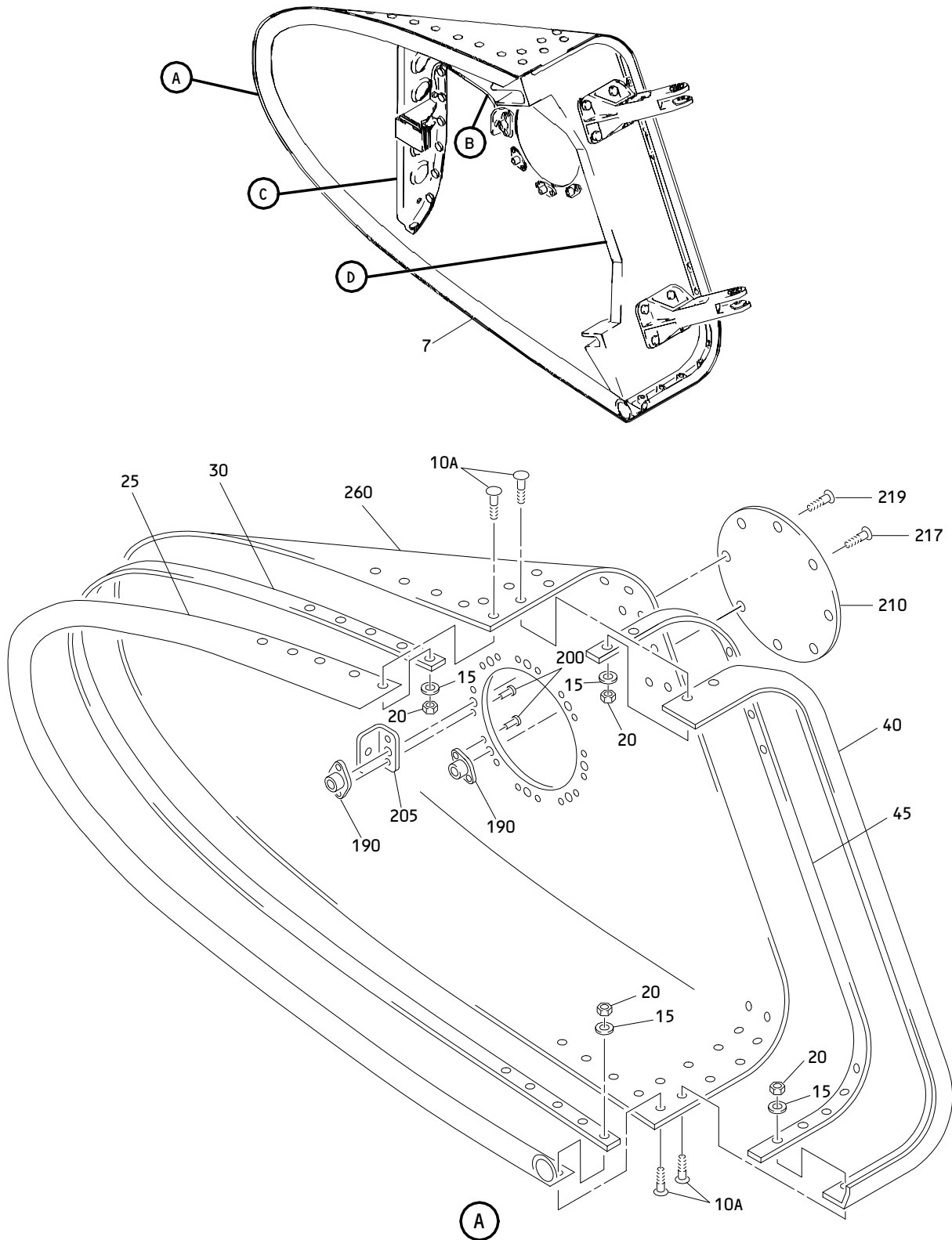
# 57-26-22

ILLUSTRATED PARTS LIST

01.1

Page 1011

Nov 01/02

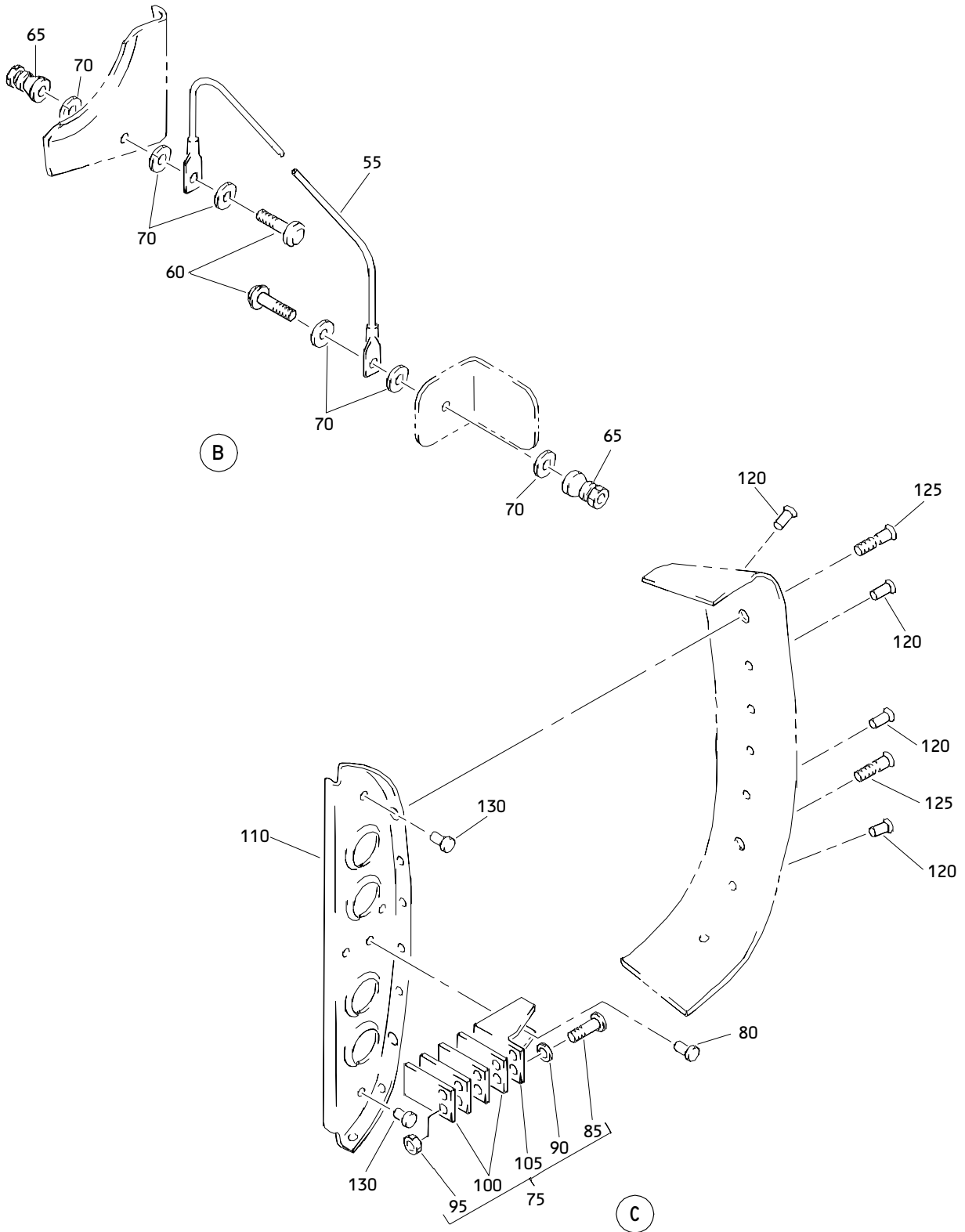


Outboard Trailing Edge Flap No. 2 Forward Fairing Assembly  
 Figure 1 (Sheet 1)

**57-26-22**

ILLUSTRATED PARTS LIST  
 01.1 Page 1012  
 Nov 01/02

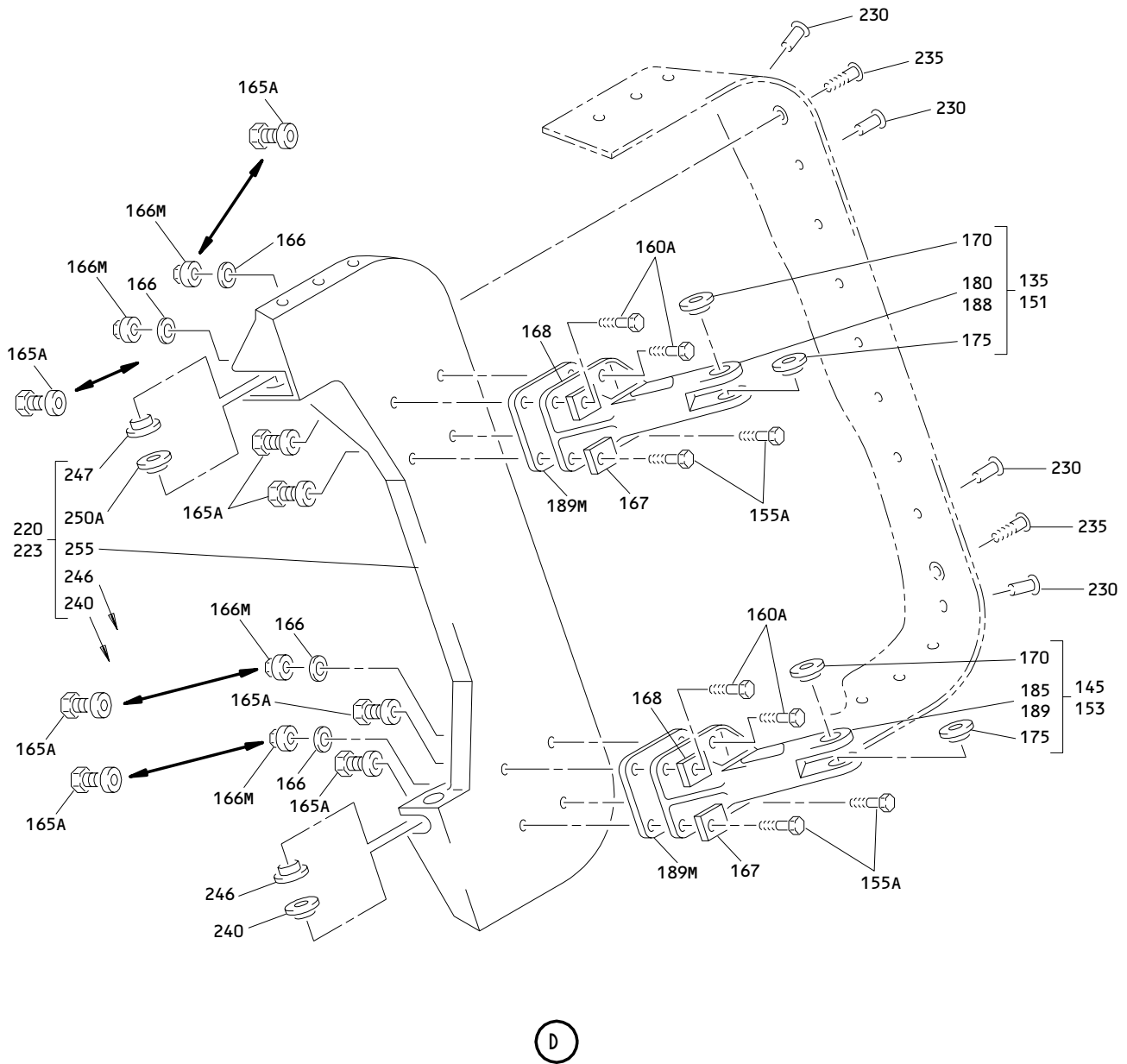




Outboard Trailing Edge Flap No. 2 Forward Fairing Assembly  
 Figure 1 (Sheet 2)

**57-26-22**

ILLUSTRATED PARTS LIST  
 01.1 Page 1013  
 Nov 01/02



Outboard Trailing Edge Flap No. 2 Forward Fairing Assembly  
 Figure 1 (Sheet 3)

**57-26-22**

ILLUSTRATED PARTS LIST  
 01.1 Page 1014  
 Nov 01/02


**BOEING**  
 COMPONENT  
 MAINTENANCE MANUAL

FIG. & ITEM	PART NO.	AIRLINE PART NUMBER	NOMENCLATURE 1234567	EFF CODE	QTY PER ASSY
01-			DELETED		
-1	113T1812-1SP		DELETED		
-1A	113T1812-15SP		FAIRING ASSY-OUTBD TE FLAP NO. 2 FWD (LH)	A	RF
-1B	113T1812-19		FAIRING ASSY-OUTBD TE FLAP NO. 2 FWD (VARIABLE) (LH)	C	RF
-1C	113T1812-21SP		FAIRING ASSY-OUTBD TE FLAP NO. 2 FWD (LH)	E	RF
-1D	113T1812-23		(FOR DETAILS SEE FIG. 2) FAIRING ASSY-OUTBD TE FLAP NO. 2 FWD (VARIABLE) (LH)	F	RF
-1E	113T1812-25SP		(FOR DETAILS SEE FIG. 2) FAIRING ASSY-OUTBD TE FLAP NO. 2 FWD (LH)	J	RF
-1F	113T1812-27		(FOR DETAILS SEE FIG. 2) FAIRING ASSY-OUTBD TE FLAP NO. 2 FWD (LH)	L	RF
-1G	113T1812-29		(FOR DETAILS SEE FIG. 2) FAIRING ASSY-OUTBD TE FLAP NO. 2 FWD (LH)	N	RF
-1H	113T1812-31		(FOR DETAILS SEE FIG. 2) FAIRING ASSY-OUTBD TE FLAP NO. 2 FWD (VARIABLE) (LH)	P	RF
-1J	113T1812-33		(FOR DETAILS SEE FIG. 2) FAIRING ASSY-OUTBD TE FLAP NO. 2 FWD (VARIABLE) (LH)	Q	RF
-1K	113T1812-51		(FOR DETAILS SEE FIG. 2) FAIRING ASSY-OUTBD TE FLAP NO. 2 FWD (VARIABLE) (LH)	U	RF
R -1L	113T1812-57		(FOR DETAILS SEE FIG. 2) FAIRING ASSY-OUTBD TE FLAP NO. 2 FWD (LH)	W	RF
R -1M	113T1812-69G		(FOR DETAILS SEE FIG. 2) FAIRING ASSY-OUTBD TE FLAP NO. 2 FWD (LH)	Y	RF
-5	113T1812-2SP		DELETED		
-5A	113T1812-16SP		FAIRING ASSY-OUTBD TE FLAP NO. 7 FWD (RH)	B	RF
-5B	113T1812-20		FAIRING ASSY-OUTBD TE FLAP NO. 7 FWD (VARIABLE) (RH)	D	RF
-5C	113T1812-22SP		FAIRING ASSY-OUTBD TE FLAP NO. 7 FWD (RH)	G	RF
			(FOR DETAILS SEE FIG. 2)		

57-26-22

 ILLUSTRATED PARTS LIST  
 01.1 Page 1015  
 Nov 01/02

FIG. & ITEM	PART NO.	AIRLINE PART NUMBER	NOMENCLATURE 1234567	EFF CODE	QTY PER ASSY
01- -5D	113T1812-24		FAIRING ASSY-OUTBD TE FLAP NO. 7 FWD (VARIABLE) (RH) (FOR DETAILS SEE FIG. 2)	H	RF
-5E	113T1812-26SP		FAIRING ASSY-OUTBD TE FLAP NO. 7 FWD (RH) (FOR DETAILS SEE FIG. 2)	K	RF
-5F	113T1812-28		FAIRING ASSY-OUTBD TE FLAP NO. 7 FWD (RH) (FOR DETAILS SEE FIG. 2)	M	RF
-5G	113T1812-30		FAIRING ASSY-OUTBD TE FLAP NO. 7 FWD (RH) (FOR DETAILS SEE FIG. 2)	R	RF
-5H	113T1812-32		FAIRING ASSY-OUTBD TE FLAP NO. 7 FWD (VARIABLE) (RH) (FOR DETAILS SEE FIG. 2)	S	RF
-5J	113T1812-34		FAIRING ASSY-OUTBD TE FLAP NO. 7 FWD (VARIABLE) (RH) (FOR DETAILS SEE FIG. 2)	T	RF
-5K	113T1812-52		FAIRING ASSY-OUTBD TE FLAP NO. 7 FWD (VARIABLE) (RH) (FOR DETAILS SEE FIG. 2)	V	RF
R -5L	113T1812-58		FAIRING ASSY-OUTBD TE FLAP NO. 7 FWD (RH) (FOR DETAILS SEE FIG. 2)	X	RF
R -5M	113T1812-70G		FAIRING ASSY-OUTBD TE FLAP NO. 7 FWD (RH) (FOR DETAILS SEE FIG. 2)	Z	RF
7	113T1812-5001		.FAIRING ASSY- (REPLD BY ITEM 7A)	A,C	1
-7A	113T1812-5003		.FAIRING ASSY- (REPLS ITEM 7) (REPLD BY ITEM 7B)	A,C	1
-7B	113T1812-5005		.FAIRING ASSY- (REPLS ITEM 7A)	A,C	1
-9	113T1812-5002		.FAIRING ASSY- (REPLD BY ITEM 9A)	B,D	1
-9A	113T1812-5004		.FAIRING ASSY- (REPLS ITEM 9) (REPLD BY ITEM 9B)	B,D	1
-9B	113T1812-5006		.FAIRING ASSY- (REPLS ITEM 9A)	B,D	1
10	BACB30NN3K4		DELETED		
10A	BACB30NN3K2		..BOLT	A-D	37
15	AN960XC10L		..WASHER	A-D	37

57-26-22

 ILLUSTRATED PARTS LIST  
 01.1 Page 1016  
 Nov 01/02


**BOEING**  
 COMPONENT  
 MAINTENANCE MANUAL

FIG. & ITEM	PART NO.	AIRLINE PART NUMBER	NOMENCLATURE 1234567	EFF CODE	QTY PER ASSY
01-20	H10-3BAC		..NUT- (V15653) (SPEC BACN10JC3) (OPT NS202101-02 (V80539)) (OPT RMLH9075-3W (V72962)) (OPT T6S1032J (V71087)) (OPT VN303A02 (V92215)) (OPT 96-02 (V80539)) (OPT BRH10A3 (V52828))	A-D	37
25	113T1812-5		..SEAL- (MFD FROM EXTR RUBBER 10-60754-319 65.00 IN.)	A-D	1
30	113T1812-7		..RETAINER	A,C	1
-35	113T1812-8		..RETAINER	B,D	1
40	113T1812-6		..SEAL- (MFD FROM EXTR RUBBER 10-60754-336 40.00 IN.)	A,C	1
-40A	113T1812-11		DELETED		
-43	113T1812-11		..SEAL- (MFD FROM EXTR RUBBER 10-60754-336 40.00 IN.)	B,D	1
45	113T1812-9		..RETAINER	A,C	1
-50	113T1812-10		..RETAINER	B,D	1
55	BACJ40A20-5		..JUMPER ASSY	A-D	1

57-26-22

 ILLUSTRATED PARTS LIST  
 01.1 Page 1017  
 Nov 01/02

FIG. & ITEM	PART NO.	AIRLINE PART NUMBER	NOMENCLATURE 1234567	EFF CODE	QTY PER ASSY
01- 60	HL448UC6-4		ATTACHING PARTS ..BOLT- (V56878) (SPEC BACB30MB6A4) (OPT HL448UC6-4 (V73197)) (OPT HL448UC6-4 (V92215)) (OPT HL448UC6-4 (V97928)) (OPT 69308-6A4 (V56878)) (OPT HL448UC6-4 (V80539)) (OPT HL448UC6-4 (V08524)) (OPT HL448UC6-4 (V9N513)) (OPT WC4486-4 (V60516))	A-D	2
65	HL1187-6		..COLLAR- (V73197) (SPEC BACC30X6) (OPT HL87-6 (V73197)) (OPT HL87-6 (V92215)) (OPT HL1187-6 (V56878)) (OPT HL1187-6 (V92215)) (OPT HL87-6 (V56878)) (OPT HL1187-6 (V5M902))	A-D	2

**57-26-22**

ILLUSTRATED PARTS LIST

01.1

Page 1018

Nov 01/02


**BOEING**  
 COMPONENT  
 MAINTENANCE MANUAL

FIG. & ITEM	PART NO.	AIRLINE PART NUMBER	NOMENCLATURE 1234567	EFF CODE	QTY PER ASSY
01-70	AN960-10L		..WASHER -----*	A-D	6
75	113T1817-1		..FITTING ASSY ATTACHING PARTS	A-D	1
80	BACR15FT8KE		..RIVET- (SIZE DETERMINE ON INST) -----*	A-D	2
85	BACS12ER08K12		...SCREW	A-D	2
90	AN960PD8		...WASHER	A-D	2
95	H10-08BAC		...NUT- (V15653) (SPEC BACN10JC08) (OPT NS202101-82 (V80539)) (OPT RMLH9075-82W (V72962)) (OPT T6S832J (V71087)) (OPT VN303A82 (V92215)) (OPT 96-82 (V80539)) (OPT BRH10A08 (V52828))	A-D	2
100	BACF3F014J020NN		...FILLER	A-D	4
105	113T1817-4		...FITTING-BATHTUB	A-D	1
110	113T1812-3		..BULKHEAD	A,C	1
-115	113T1812-4		..BULKHEAD ATTACHING PARTS	B,D	1
120	BACR15BA6AD		..RIVET- (SIZE DETERMINE ON INST)	A-D	8
125	NAS1399MW6-4		..RIVET	A-D	2
130	BACR15FT8AD		..RIVET- (SIZE DETERMINE ON INST) -----*	A-D	2

57-26-22

ILLUSTRATED PARTS LIST

01.1

Page 1019

Nov 01/02

FIG. & ITEM	PART NO.	AIRLINE PART NUMBER	NOMENCLATURE 1234567	EFF CODE	QTY PER ASSY
01-135	113T1831-5		..FITTING ASSY-HINGE (THE GROUP OF PARTS CONSISTING OF ITEMS 135, 145, 166, 166M, 167, 168, 189M IS OPT TO ITEMS 151, 153, 165B, 189S) (USED ON ITEM 7)	A,C	1
-140	113T1831-6		..FITTING ASSY-HINGE (THE GROUP OF PARTS CONSISTING OF ITEMS 140, 150, 166, 166M, 167, 168, 189M IS OPT TO ITEMS 151G, 153G, 165B, 189S) (USED ON ITEM 9)	B,D	1
145	113T1831-7		..FITTING ASSY-HINGE (THE GROUP OF PARTS CONSISTING OF ITEMS 135, 145, 166, 166M, 167, 168, 189M IS OPT TO ITEMS 151, 153, 165B, 189S) (USED ON ITEM 7)	A,C	1
-150	113T1831-8		..FITTING ASSY-HINGE (THE GROUP OF PARTS CONSISTING OF ITEMS 140, 150, 166, 166M, 167, 168, 189M IS OPT TO ITEMS 151G, 153G, 165B, 189S) (USED ON ITEM 9)	B,D	1

# 57-26-22

 ILLUSTRATED PARTS LIST  
 01.1 Page 1020  
 Nov 01/02




**BOEING**  
 COMPONENT  
 MAINTENANCE MANUAL

FIG. & ITEM	PART NO.	AIRLINE PART NUMBER	NOMENCLATURE 1234567	EFF CODE	QTY PER ASSY
01- -151	113T1831-21		..FITTING ASSY-HINGE (THE GROUP OF PARTS CONSISTING OF ITEMS 135, 145, 166, 166M, 167, 168, 189M IS OPT TO ITEMS 151, 153, 165B, 189S) (USED ON ITEM 7)	A,C	1
-151A	113T1831-21		..FITTING ASSY-HINGE (USED ON ITEMS 7A, 7B) (USED WITH ITEMS 165B, 189S)	A,C	1
-151G	113T1831-22		..FITTING ASSY-HINGE (THE GROUP OF PARTS CONSISTING OF ITEMS 140, 150, 166, 166M, 167, 168, 189M IS OPT TO ITEMS 151G, 153G, 165B, 189S) (USED ON ITEM 9)	B,D	1
-151H	113T1831-22		..FITTING ASSY-HINGE (USED ON ITEMS 9A, 9B) (USED WITH ITEMS 165B, 189S)	B,D	1
-153	113T1831-23		..FITTING ASSY-HINGE (THE GROUP OF PARTS CONSISTING OF ITEMS 135, 145, 166, 166M, 167, 168, 189M IS OPT TO ITEMS 151, 153, 165B, 189S) (USED ON ITEM 7)	A,C	1

57-26-22

 ILLUSTRATED PARTS LIST  
 01.1 Page 1021  
 Nov 01/02

FIG. & ITEM	PART NO.	AIRLINE PART NUMBER	NOMENCLATURE 1234567	EFF CODE	QTY PER ASSY
01- -153A	113T1831-23		..FITTING ASSY-HINGE (USED ON ITEMS 7A, 7B) (USED WITH ITEMS 165B, 189S)	A,C	1
-153G	113T1831-24		..FITTING ASSY-HINGE (THE GROUP OF PARTS CONSISTING OF ITEMS 140, 150, 166, 166M, 167, 168, 189M IS OPT TO ITEMS 151G, 153G, 165B, 189S) (USED ON ITEM 9)	B,D	1
-153H	113T1831-24		..FITTING ASSY-HINGE (USED ON ITEMS 9A, 9B) (USED WITH ITEMS 165B, 189S)	B,D	1
155 155A	HL10VAZ8-4 HL10VAZ8-6		ATTACHING PARTS DELETED ..BOLT- (V60516) (SPEC BACB30MY8K6) (OPT B30MY8K6 (V97928))	A-D	4
155B	HL10VAZ8-6		DELETED		
155C	HL10VAZ8-6		DELETED		
160	HL10VAZ8-5		DELETED		
160A	HL10VAZ8-7		..BOLT- (V60516) (SPEC BACB30MY8K7) (OPT B30MY8K7 (V97928))	A-D	4
160B	HL10VAZ8-7		DELETED		
160C	HL10VAZ8-7		DELETED		

57-26-22

ILLUSTRATED PARTS LIST

01.1

Page 1022

Nov 01/02

**BOEING**  
 COMPONENT  
 MAINTENANCE MANUAL

FIG. & ITEM	PART NO.	AIRLINE PART NUMBER	NOMENCLATURE	EFF CODE	QTY PER ASSY
			1234567		
01- 165 165A	HL79-8 HL82-8APBW		DELETED ..COLLAR- (V73197) (SPEC BACC30AG8) (OPT HL82-8APBW (V92215)) (OPT HL82-8APBW (V56878)) (OPT HL82-8APBW (V5M902)) (LIMITED)	A-D	8
-165B	HL82-8APBW		..COLLAR- (V73197) (SPEC BACC30AG8) (OPT HL82-8APBW (V92215)) (OPT HL82-8APBW (V56878)) (OPT HL82-8APBW (V5M902)) (LIMITED) (THE GROUP OF PARTS CONSISTING OF ITEMS 135, 145, 166, 166M, 167, 168, 189M IS OPT TO ITEMS 151, 153, 165B, 189S) (THE GROUP OF PARTS CONSISTING OF ITEMS 140, 150, 166, 166M, 167, 168, 189M IS OPT TO ITEMS 151G, 153G, 165B, 189S)	A-D	8

**57-26-22**

ILLUSTRATED PARTS LIST  
 01.1 Page 1023  
 Nov 01/02

FIG. & ITEM	PART NO.	AIRLINE PART NUMBER	NOMENCLATURE	EFF CODE	QTY PER ASSY
01-166	AS46-4		1234567  ..WASHER- (V10630) (SPEC BACW10AU4) (OPT K19701P4 (V15653)) (OPT 53488W428 (V56878)) (OPT 6073-04 (V72962)) (OPT TLN1020L4W (V08524)) (LIMITED) (THE GROUP OF PARTS CONSISTING OF ITEMS 135, 145, 166, 166M, 167, 168, 189M IS OPT TO ITEMS 151, 153, 165B, 189S) (THE GROUP OF PARTS CONSISTING OF ITEMS 140, 150, 166, 166M, 167, 168, 189M IS OPT TO ITEMS 151G, 153G, 165B, 189S)	A-D	8

**57-26-22**

 ILLUSTRATED PARTS LIST  
 01.1 Page 1024  
 Nov 01/02


**BOEING**  
 COMPONENT  
 MAINTENANCE MANUAL

FIG. & ITEM	PART NO.	AIRLINE PART NUMBER	NOMENCLATURE	EFF CODE	QTY PER ASSY
01-166M	H19700P4		1234567 ..NUT- (V15653) (SPEC BACN10MT4) (OPT TLN1020-4N (V08524)) (OPT 52LH6073-048 (V72962)) (OPT 53488-428 (V56878)) (LIMITED) (THE GROUP OF PARTS CONSISTING OF ITEMS 135, 145, 166, 166M, 167, 168, 189M IS OPT TO ITEMS 151, 153, 165B, 189S) (THE GROUP OF PARTS CONSISTING OF ITEMS 140, 150, 166, 166M, 167, 168, 189M IS OPT TO ITEMS 151G, 153G, 165B, 189S)	A-D	8
167	113T1812-17		..FILLER- (LIMITED) (THE GROUP OF PARTS CONSISTING OF ITEMS 135, 145, 166, 166M, 167, 168, 189M IS OPT TO ITEMS 151, 153, 165B, 189S) (THE GROUP OF PARTS CONSISTING OF ITEMS 140, 150, 166, 166M, 167, 168, 189M IS OPT TO ITEMS 151G, 153G, 165B, 189S)	A-D	4

57-26-22

 ILLUSTRATED PARTS LIST  
 01.1 Page 1025  
 Nov 01/02

FIG. & ITEM	PART NO.	AIRLINE PART NUMBER	NOMENCLATURE 1234567	EFF CODE	QTY PER ASSY
01-168	113T1812-18		..FILLER- (LIMITED) (THE GROUP OF PARTS CONSISTING OF ITEMS 135, 145, 166, 166M, 167, 168, 189M IS OPT TO ITEMS 151, 153, 165B, 189S) (THE GROUP OF PARTS CONSISTING OF ITEMS 140, 150, 166, 166M, 167, 168, 189M IS OPT TO ITEMS 151G, 153G, 165B, 189S) -----*-----	A-D	4
170	BACB28AM07B013A		...BUSHING	A-D	1
175	BACB28AP05P023		...BUSHING	A-D	1
180	113T1831-13		...FITTING- (USED ON ITEM 135)	A,C	1
-182	113T1831-14		...FITTING-HINGE (USED ON ITEM 140)	B,D	1
185	113T1831-15		...FITTING- (USED ON ITEM 145)	A,C	1
-187	113T1831-16		...FITTING- (USED ON ITEM 150)	B,D	1
-188	113T1831-29		...FITTING- (USED ON ITEMS 151, 151A)	A,C	1
-188G	113T1831-30		...FITTING- (USED ON ITEMS 151G, 151H)	B,D	1
-189	113T1831-31		...FITTING- (USED ON ITEMS 153, 153A)	A,C	1
-189G	113T1831-32		...FITTING- (USED ON ITEMS 153G, 153H)	B,D	1

**57-26-22**

 ILLUSTRATED PARTS LIST  
 01.1 Page 1026  
 Nov 01/02


**BOEING**  
 COMPONENT  
 MAINTENANCE MANUAL

FIG. & ITEM	PART NO.	AIRLINE PART NUMBER	NOMENCLATURE 1234567	EFF CODE	QTY PER ASSY
01-189M	BACS40R30B37F		..SHIM- (THE GROUP OF PARTS CONSISTING OF ITEMS 135, 145, 166, 166M, 167, 168, 189M IS OPT TO ITEMS 151, 153, 165B, 189S) (THE GROUP OF PARTS CONSISTING OF ITEMS 140, 150, 166, 166M, 167, 168, 189M IS OPT TO ITEMS 151G, 153G, 165B, 189S) (USED ON ITEMS 7, 9)	A-D	AR
-189S	BACS40R30C39F		..SHIM- (THE GROUP OF PARTS CONSISTING OF ITEMS 135, 145, 166, 166M, 167, 168, 189M IS OPT TO ITEMS 151, 153, 165B, 189S) (THE GROUP OF PARTS CONSISTING OF ITEMS 140, 150, 166, 166M, 167, 168, 189M IS OPT TO ITEMS 151G, 153G, 165B, 189S) (USED ON ITEMS 7, 9)	A-D	AR
-189T	BACS40R30C39F		..SHIM- (USED ON ITEMS 7A, 7B, 9A, 9B)	A-D	AR
190	NS103191-02-2		..NUTPLATE- (V80539) (SPEC BACN10KE3B2) (OPT F51750-3-2 (V15653)) (OPT RMF9213-2-3 (V72962)) (OPT BRFR220A3-2 (V52825)) ATTACHING PARTS	A-D	8
200	BACR15BA3AD		..RIVET- (SIZE DETERMINE ON INST) -----*	A-D	16
205	113T1803-1		..CLIP	A-D	1

57-26-22

 ILLUSTRATED PARTS LIST  
 01.1 Page 1027  
 Nov 01/02

FIG. & ITEM	PART NO.	AIRLINE PART NUMBER	NOMENCLATURE 1234567	EFF CODE	QTY PER ASSY
01-					
210	113T1813-5		..DOOR-ACCESS	A,C	1
-215	113T1813-6		..DOOR-ACCESS ATTACHING PARTS	B,D	1
217	BACB30LR3-3		..BOLT	A-D	7
219	BACB30LR3-4		..BOLT	A-D	1
			-----*-----		
220	113T1865-1		..BULKHEAD ASSY- (OPT ITEM 220A) (USED ON ITEMS 7, 7A)	A,C	1
-220A	113T1865-5		..BULKHEAD ASSY- (OPT ITEM 220) (USED ON ITEMS 7, 7A)	A,C	1
-223	113T1865-5		..BULKHEAD ASSY- (OPT ITEM 223A) (USED ON ITEM 7B)	A,C	1
-223A	113T1865-1		..BULKHEAD ASSY- (OPT ITEM 223) (USED ON ITEM 7B)	A,C	1
-225	113T1865-2		..BULKHEAD ASSY- (OPT ITEM 225A) (USED ON ITEMS 9, 9A)	B,D	1
-225A	113T1865-6		..BULKHEAD ASSY- (OPT ITEM 225) (USED ON ITEMS 9, 9A)	B,D	1
-227	113T1865-6		..BULKHEAD ASSY- (OPT ITEM 227A) (USED ON ITEM 9B)	B,D	1
-227A	113T1865-2		..BULKHEAD ASSY- (OPT ITEM 227) (USED ON ITEM 9B) ATTACHING PARTS	B,D	1

**57-26-22**

 ILLUSTRATED PARTS LIST  
 01.1 Page 1028  
 Nov 01/02




**BOEING**  
 COMPONENT  
 MAINTENANCE MANUAL

FIG. & ITEM	PART NO.	AIRLINE PART NUMBER	NOMENCLATURE 1234567	EFF CODE	QTY PER ASSY
01-230	BACR15BA6AD		..RIVET- (SIZE DETERMINE ON INST)	A-D	17
235	NAS1399MW6-4		..RIVET- -----*-----	A-D	2
240	BACB28AA5C028		...BUSHING	A-D	1
245	BACB28AM07B012A		DELETED		
246	BACB28AT07B012C		...BUSHING	A-D	1
247	BACB28AT07B020C		...BUSHING	A-D	1
250	BACB28AP05P012		DELETED		
250A	BACB28AP05P015		...BUSHING	A-D	1
255	113T1865-3		...BULKHEAD- (USED ON ITEM 220)	A,C	1
-255A	113T1865-7		...BULKHEAD- (USED ON ITEMS 220A, 223)	A,C	1
-257	113T1865-4		...BULKHEAD- (USED ON ITEM 225)	B,D	1
-257A	113T1865-8		...BULKHEAD- (USED ON ITEMS 225A, 227)	B,D	1
260	113T1852-1		..BOND ASSY	A,C	1
-260A	113T1865-8		DELETED		
-265	113T1852-2		..BOND ASSY	B,D	1

- Item Not Illustrated

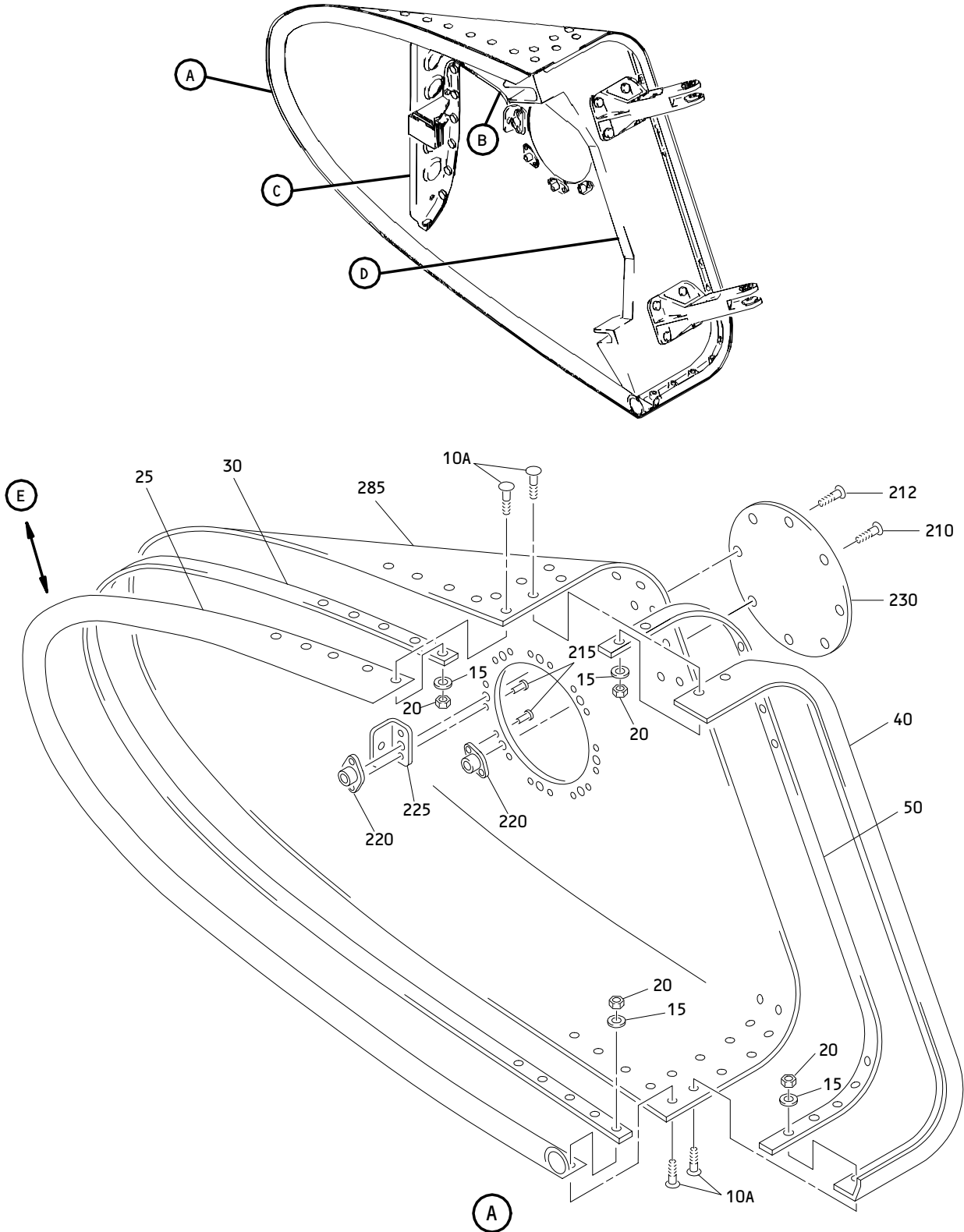
# 57-26-22

ILLUSTRATED PARTS LIST

01.1

Page 1029

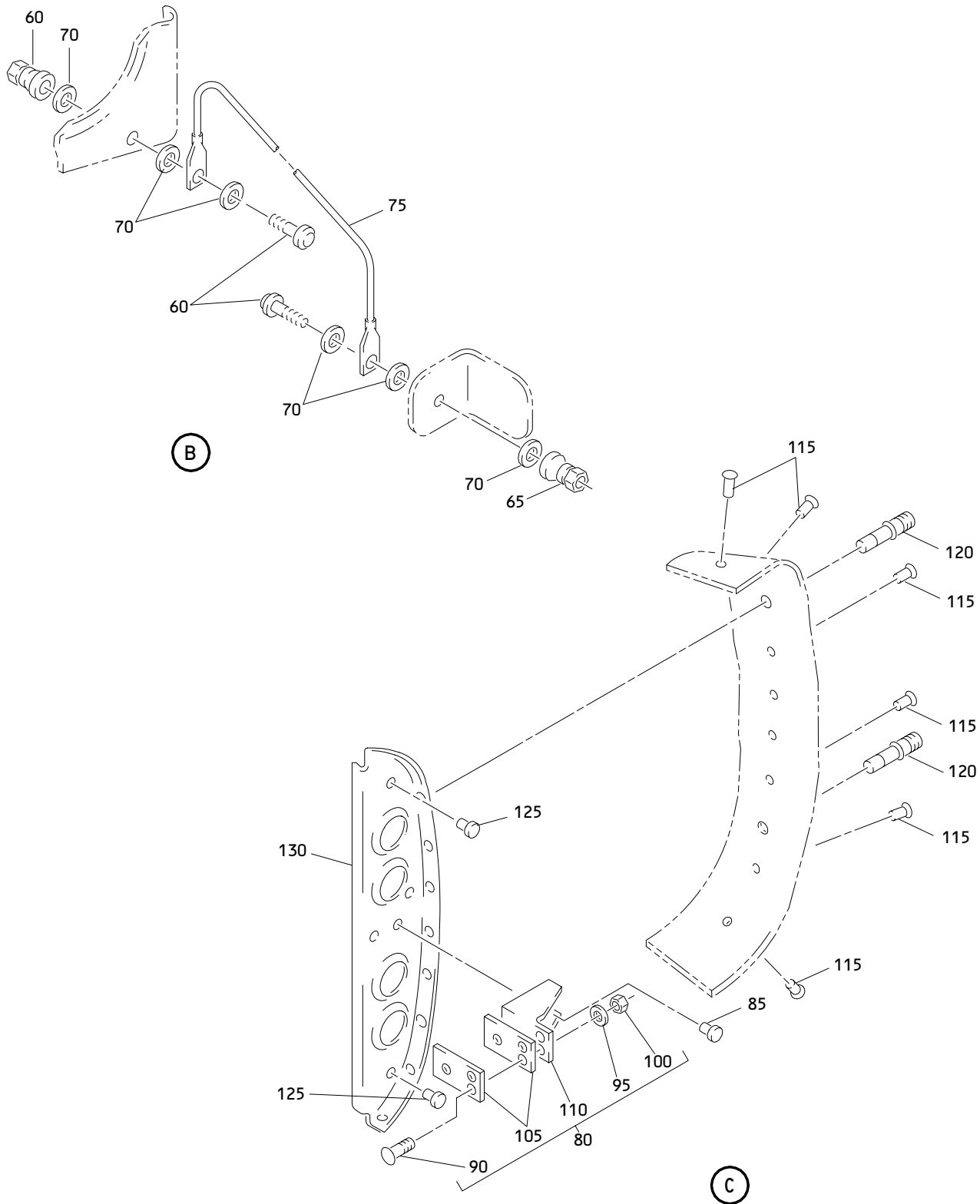
Nov 01/02



Outboard Trailing Edge Flap No. 2 Forward Fairing Assembly  
 Figure 2 (Sheet 1)

**57-26-22**

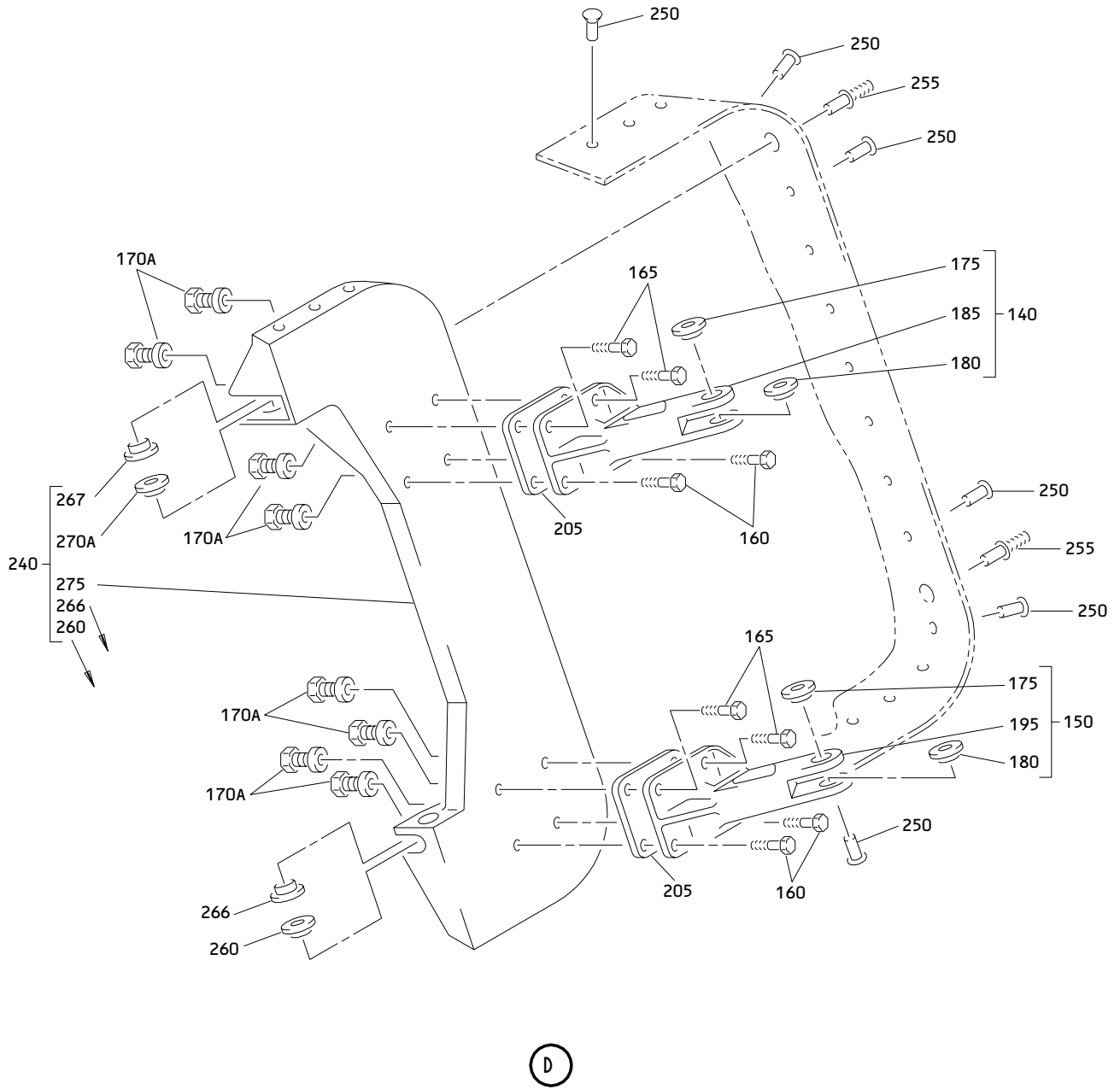
ILLUSTRATED PARTS LIST  
 01.1 Page 1031  
 Nov 01/02



**Outboard Trailing Edge Flap No. 2 Forward Fairing Assembly  
 Figure 2 (Sheet 2)**

**57-26-22**

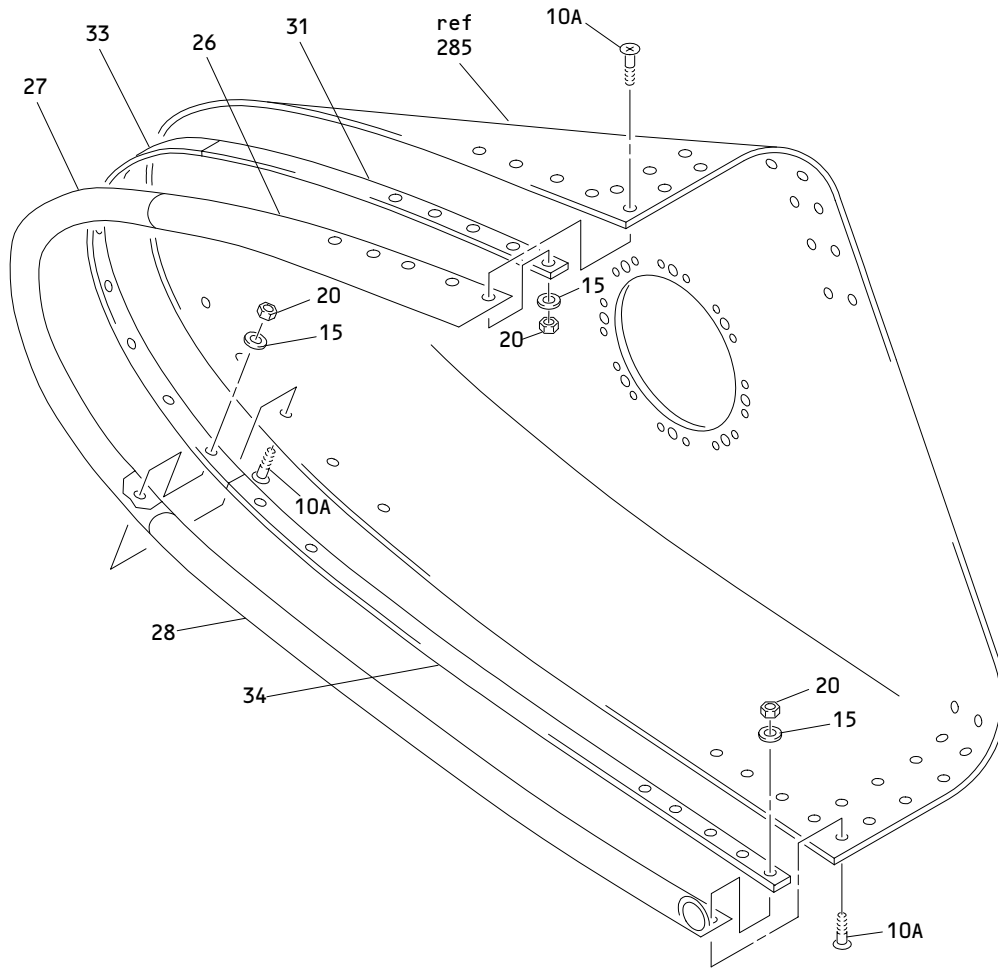
**ILLUSTRATED PARTS LIST  
 01.1 Page 1032  
 Nov 01/02**



Outboard Trailing Edge Flap No. 2 Forward Fairing Assembly  
Figure 2 (Sheet 3)

**57-26-22**

ILLUSTRATED PARTS LIST  
01.1 Page 1033  
Nov 01/02



(E)

Outboard Trailing Edge Flap No. 2 Forward Fairing Assembly  
 Figure 2 (Sheet 4)

**57-26-22**

ILLUSTRATED PARTS LIST  
 01.1 Page 1034  
 Nov 01/02


**BOEING**  
 COMPONENT  
 MAINTENANCE MANUAL

FIG. & ITEM	PART NO.	AIRLINE PART NUMBER	NOMENCLATURE 1234567	EFF CODE	QTY PER ASSY
02- -1	113T1812-21SP		FAIRING ASSY-OUTBD TE FLAP NO. 2 FWD (LH)	E	RF
-1A	113T1812-23		FAIRING ASSY-OUTBD TE FLAP NO. 2 FWD (VARIABLE) (LH)	F	RF
-1B	113T1812-25SP		FAIRING ASSY-OUTBD TE FLAP NO. 2 FWD (LH)	J	RF
-1C	113T1812-27		FAIRING ASSY-OUTBD TE FLAP NO. 2 FWD (VARIABLE) (LH)	L	RF
-1D	113T1812-29		FAIRING ASSY-OUTBD TE FLAP NO. 2 FWD (LH)	N	RF
-1E	113T1812-31		FAIRING ASSY-OUTBD TE FLAP NO. 2 FWD (VARIABLE) (LH)	P	RF
-1F	113T1812-33		FAIRING ASSY-OUTBD TE FLAP NO. 2 FWD (VARIABLE) (LH)	Q	RF
-1G	113T1812-51		FAIRING ASSY-OUTBD TE FLAP NO. 2 FWD (VARIABLE) (LH)	U	RF
R -1H	113T1812-57		FAIRING ASSY-OUTBD TE FLAP NO. 2 FWD (LH)	W	RF
R -1J	113T1812-69G		FAIRING ASSY-OUTBD TE FLAP NO. 2 FWD (LH)	Y	RF
-5	113T1812-22SP		FAIRING ASSY-OUTBD TE FLAP NO. 7 FWD (RH)	G	RF
-5A	113T1812-24		FAIRING ASSY-OUTBD TE FLAP NO. 7 FWD (VARIABLE) (RH)	H	RF
-5B	113T1812-26SP		FAIRING ASSY-OUTBD TE FLAP NO. 7 FWD (RH)	K	RF
-5C	113T1812-28		FAIRING ASSY-OUTBD TE FLAP NO. 7 FWD (VARIABLE) (RH)	M	RF
-5D	113T1812-30		FAIRING ASSY-OUTBD TE FLAP NO. 7 FWD (RH)	R	RF
-5E	113T1812-32		FAIRING ASSY-OUTBD TE FLAP NO. 7 FWD (VARIABLE) (RH)	S	RF
-5F	113T1812-34		FAIRING ASSY-OUTBD TE FLAP NO. 7 FWD (VARIABLE) (RH)	T	RF
-5G	113T1812-52		FAIRING ASSY-OUTBD TE FLAP NO. 7 FWD (VARIABLE) (RH)	V	RF
R -5H	113T1812-58		FAIRING ASSY-OUTBD TE FLAP NO. 7 FWD (RH)	X	RF
R -5J	113T1812-70G		FAIRING ASSY-OUTBD TE FLAP NO. 7 FWD (RH)	Z	RF

57-26-22

 ILLUSTRATED PARTS LIST  
 01.1 Page 1035  
 Nov 01/02

FIG. & ITEM	PART NO.	AIRLINE PART NUMBER	NOMENCLATURE	EFF CODE	QTY PER ASSY
			1234567		
02- 10 10A 15 20	BACB30NN3K4 BACB30NN3K2 AN960XC10L H10-3BAC		DELETED .BOLT .WASHER .NUT- (V15653) (SPEC BACN10JC3) (OPT NS202101-02 (V80539)) (OPT RMLH9075-3W (V72962)) (OPT T6S1032J (V71087)) (OPT VN303A02 (V92215)) (OPT 96-02 (V80539)) (OPT BRH10A3 (V52828))	E-Z E-Z E-Z	37 37 37
25	113T1812-5		.SEAL- (-5 T/W -7 RETAINER I/W -35 AND -39 AND -45 T/W -37 AND -41 AND -43 RETAINERS ON LEFT SIDE) (-5 T/W -8 RETAINER I/W -36 AND -40 AND -45 T/W -38 AND -42 AND -44 RETAINERS ON RIGHT SIDE) (MFD FROM EXTR RUBBER 10-60754-319 65.00 IN.)	E-M	1

57-26-22

ILLUSTRATED PARTS LIST

01.1

Page 1036

Nov 01/02


**BOEING**  
 COMPONENT  
 MAINTENANCE MANUAL

FIG. & ITEM	PART NO.	AIRLINE PART NUMBER	NOMENCLATURE 1234567	EFF CODE	QTY PER ASSY
02-26	113T1812-35		.SEAL- (-5 T/W -7 RETAINER I/W -35 AND -39 AND -45 T/W -37 AND -41 AND -43 RETAINERS ON LEFT SIDE) (MFD FROM EXTR RUBBER 10-60754-278 17.50 IN.)	N-Q,U	1
R -26A	113T1812-55		.SEAL- (MFD FROM EXTR RUBBER 10-60754-278 17.5 IN.)	W,Y	1
-26G	113T1812-36		.SEAL- (-5 T/W -8 RETAINER I/W -36 AND -40 AND -45 T/W -38 AND -42 AND -44 RETAINERS ON RIGHT SIDE) (MFD FROM EXTR RUBBER 10-60754-278 17.50 IN.)	R-T,V	1
R -26H	113T1812-56		.SEAL- (MFD FROM EXTR RUBBER 10-60754-278 17.5 IN.)	X,Z	1
27	113T1812-45		.SEAL- (-45 T/W -35,-37,-39,-41 AND -43 I/W -5 T/W -7 ON LEFT SIDE) (-45 T/W -36,-38,-40,-42 AND -44 I/W -5 T/W -8 ON RIGHT SIDE) (-45 I/W -67 ON FAIRING NO. 2 - LEFT SIDE) (-45 I/W -68 ON FAIRING NO. 7 - RIGHT SIDE) (MFD FROM EXTR RUBBER 10-60754-146 23.50 IN.)	N-V	1
R -27A	113T1812-67		.SEAL- (-45 I/W -67 ON FAIRING NO. 2 - LEFT SIDE)	W,Y	1
R -27L	113T1812-68		.SEAL- (-45 I/W -68 ON FAIRING NO. 7 - RIGHT SIDE)	X,Z	1

57-26-22

 ILLUSTRATED PARTS LIST  
 01.1 Page 1037  
 Nov 01/02



FIG. & ITEM	PART NO.	AIRLINE PART NUMBER	NOMENCLATURE 1234567	EFF CODE	QTY PER ASSY
02-28	113T1812-39		.SEAL- (-5 T/W -7 RETAINER I/W -35 AND -39 AND -45 T/W -37 AND -41 AND -43 RETAINERS ON LEFT SIDE) (MFD FROM EXTR RUBBER 10-60754-278 26.50 IN.)	N-Q,U	1
R -28A	113T1812-53		.SEAL- (MFD FROM EXTR RUBBER 10-60754-278 26.5 IN.)	W,Y	1
-29	113T1812-40		.SEAL- (-5 T/W -8 RETAINER I/W -36 AND -40 AND -45 T/W -38 AND -42 AND -44 RETAINERS ON RIGHT SIDE) (MFD FROM EXTR RUBBER 10-60754-278 26.50 IN.)	R-T,V	1
R -29A	113T1812-54		.SEAL- (MFD FROM EXTR RUBBER 10-60754-278 26.5 IN.)	X,Z	1
30	113T1812-7		.RETAINER	E,F,J ,L	1
31	113T1812-37		.RETAINER	N-Q,U	1
R -31A	113T1812-65		.RETAINER	W,Y	1
33	113T1812-43		.RETAINER	N-Q,U ,W,Y	1
34	113T1812-41		.RETAINER	N-Q,U	1
R -34A	113T1812-63		.RETAINER	W,Y	1
-35	113T1812-8		.RETAINER	G,H,K ,M	1
-36	113T1812-38		.RETAINER	R-T,V	1
R -36A	113T1812-66		.RETAINER	X,Z	1
-38	113T1812-44		.RETAINER	R-T,V ,X,Z	1

**57-26-22**

 ILLUSTRATED PARTS LIST  
 01.1 Page 1038  
 Nov 01/02


**BOEING**  
 COMPONENT  
 MAINTENANCE MANUAL

FIG. & ITEM	PART NO.	AIRLINE PART NUMBER	NOMENCLATURE 1234567	EFF CODE	QTY PER ASSY
R	02-				
	-39	113T1812-42	.RETAINER	R-T,V	1
	-39A	113T1812-64	.RETAINER	X,Z	1
	40	113T1812-6	.SEAL- (MFD FROM EXTR RUBBER 10-60754-336 40.00 IN.)	E,F,J ,L	1
	-40A	113T1812-49	.SEAL- (MFD FROM EXTR RUBBER 10-60754-336 40.00 IN.)	N-Q,U ,W,Y	1
	-45	113T1812-11	.SEAL- (MFD FROM EXTR RUBBER 10-60754-336 40.00 IN.)	G,H,K ,M	1
	-45A	113T1812-50	.SEAL- (MFD FROM EXTR RUBBER 10-60754-336 40.00 IN.)	R-T,V ,X,Z	1
	50	113T1812-9	.RETAINER	E,F,J ,L,W, Y	1
	-50A	113T1812-47	.RETAINER	N-Q,U ,W,Y	1
	-55	113T1812-10	.RETAINER	G,H,K ,M,X, Z	1
	-55A	113T1812-48	.RETAINER	R-T,V ,X,Z	1
	60	HL448UC6-4	.BOLT- (V56878) (SPEC BACB30MB6A4) (OPT HL448UC6-4 (V73197)) (OPT HL448UC6-4 (V92215)) (OPT HL448UC6-4 (V97928)) (OPT 69308-6A4 (V56878)) (OPT HL448UC6-4 (V80539)) (OPT HL448UC6-4 (V08524)) (OPT HL448UC6-4 (V9N513)) (OPT WC4486-4 (V60516))	E-Z	2

57-26-22

 ILLUSTRATED PARTS LIST  
 01.1 Page 1039  
 Nov 01/02

FIG. & ITEM	PART NO.	AIRLINE PART NUMBER	NOMENCLATURE 1234567	EFF CODE	QTY PER ASSY
02-65	HL1187-6		.COLLAR- (V73197) (SPEC BACC30X6) (OPT HL87-6 (V73197)) (OPT HL87-6 (V92215)) (OPT HL1187-6 (V56878)) (OPT HL1187-6 (V92215)) (OPT HL87-6 (V56878)) (OPT HL1187-6 (V5M902))	E-Z	2
70	AN960-10L		.WASHER	E-Z	6
75	BACJ40A20-5		.JUMPER ASSY	E-Z	1
80	113T1817-1		.FITTING ASSY	E-Z	1
85	BACR15FT8KE		ATTACHING PARTS .RIVET- (SIZE DETERMINE ON INST) -----*	E-Z	2
90	BACS12ER08K12		..SCREW	E-Z	2
95	AN960PD8		..WASHER	E-Z	2
100	H10-08BAC		..NUT- (V15653) (SPEC BACN10JC08) (OPT NS202101-82 (V80539)) (OPT RMLH9075-82W (V72962)) (OPT T6S832J (V71087)) (OPT VN303A82 (V92215)) (OPT 96-82 (V80539)) (OPT BRH10A08 (V52828))	E-Z	2

57-26-22

ILLUSTRATED PARTS LIST

01.1

Page 1040

Nov 01/02


**BOEING**  
 COMPONENT  
 MAINTENANCE MANUAL

FIG. & ITEM	PART NO.	AIRLINE PART NUMBER	NOMENCLATURE 1234567	EFF CODE	QTY PER ASSY
02-					
105	BACF3F014J020NN		..FILLER	E-Z	2
110	113T1817-4		..FITTING-BATHTUB	E-Z	1
115	BACR15BA6AD		.RIVET- (SIZE DETERMINE ON INST)	E-Z	8
120	NAS1399MW6-4		.RIVET	E-Z	2
125	BACR15FT8AD		.RIVET- (SIZE DETERMINE ON INST)	E-Z	2
130	113T1812-3		.BULKHEAD	E,F,J ,L, N-Q,U ,W,Y	1
-135	113T1812-4		.BULKHEAD	G,H,K ,M, R-T,V ,X,Z	1
140	113T1831-21		.FITTING ASSY-HINGE	E,F,J ,L, N-Q,U ,W,Y	1
-145	113T1831-22		.FITTING ASSY-HINGE	G,H,K ,L, R-T,V ,X,Z	1
150	113T1831-23		.FITTING ASSY-HINGE	E,F,J ,L, N-Q,U ,W,Y	1
-155	113T1831-24		.FITTING ASSY-HINGE	G,H,K ,M, R-T,V ,X,Z	1

57-26-22

ILLUSTRATED PARTS LIST

01.1

Page 1041

Nov 01/02

FIG. & ITEM	PART NO.	AIRLINE PART NUMBER	NOMENCLATURE 1234567	EFF CODE	QTY PER ASSY
02-					
160	HL10VAZ8-6		.ATTACHING PARTS .BOLT- (V60516) (SPEC BACB30MY8K6) (OPT B30MY8K6 (V97928))	E-Z	4
165	HL10VAZ8-7		.BOLT- (V60516) (SPEC BACB30MY8K7) (OPT B30MY8K7 (V97928))	E-Z	4
170	BACC30AGB		.COLLAR -----*	E-Z	8
175	BACB28AM07B013A		..BUSHING	E-Z	1
180	BACB28AP05P023		..BUSHING	E-Z	1
185	113T1831-29		..FITTING- (USED ON ITEM 140)	E,F,J ,L, N-Q,U ,W,Y	1
-190	113T1831-30		..FITTING- (USED ON ITEM 145)	G,H,K ,M, R-T,V ,X,Z	1
195	113T1831-31		..FITTING- (USED ON ITEM 150)	E,F,J ,L, N-Q,U ,W,Y	1
-200	113T1831-32		..FITTING- (USED ON ITEM 155)	G,H,K ,M, R-T,V ,X,Z	1
205	BACS40R30C39F		.SHIM	E-Z	AR
210	BACB30LR3-3		.BOLT	E-Z	7
212	BACB30LR3-4		.BOLT	E-Z	1
215	BACR15BA3AD		.RIVET- (SIZE DETERMINE ON INST)	E-Z	16
220	NS103191-02-2		.NUTPLATE- (V80539) (SPEC BACN10KE3B2) (OPT F51750-3-2 (V15653)) (OPT RMF9213-2-3 (V72962)) (OPT BRFR220A3-2 (V52825))	E-Z	8

57-26-22

ILLUSTRATED PARTS LIST

01.1

Page 1042

Nov 01/02


**BOEING**  
 COMPONENT  
 MAINTENANCE MANUAL

FIG. & ITEM	PART NO.	AIRLINE PART NUMBER	NOMENCLATURE 1234567	EFF CODE	QTY PER ASSY
02-					
R 225	113T1803-1		.CLIP	E-Z	1
R 230	113T1813-5		.DOOR-ACCESS	E,F,J ,L, N-Q,U ,W,Y	1
R -235	113T1813-6		.DOOR-ACCESS	G,H,K ,M, R-T,V ,X,Z	1
240	113T1865-5		.BULKHEAD ASSY- (OPT ITEM 240A)	E,F,J ,L, N-Q,U ,W,Y	1
-240A	113T1865-1		.BULKHEAD ASSY- (OPT ITEM 240)	E,F,J ,L, N-Q,U ,W,Y	1
-245	113T1865-6		.BULKHEAD ASSY- (OPT ITEM 245A)	G,H,K ,M, R-T,V ,X,Z	1
-245A	113T1865-2		.BULKHEAD ASSY- (OPT ITEM 245)	G,H,K ,M, R-T,V ,X,Z	1
250	BACR15BA6AD		ATTACHING PARTS .RIVET- (SIZE DETERMINE ON INST)	E-Z	17
255	NAS1399MW6-4		.RIVET -----*-----	E-Z	2
260	BACB28AA5C028		..BUSHING	E-Z	1

57-26-22

 ILLUSTRATED PARTS LIST  
 01.1 Page 1043  
 Nov 01/02

FIG. & ITEM	PART NO.	AIRLINE PART NUMBER	NOMENCLATURE 1234567	EFF CODE	QTY PER ASSY
02-					
265	BACB28AM07B012A		DELETED		
266	BACB28AT07B012C		..BUSHING	E-Z	1
267	BACB28AT07B020C		..BUSHING	E-Z	1
270	BACB28AP05P012		DELETED		
270A	BACB28AP05P015		..BUSHING	E-Z	1
275	113T1865-7		..BULKHEAD	E,F,J ,L, N-Q,U ,W,Y	1
-280	113T1865-8		..BULKHEAD	G,H,K ,M, R-T,V ,X,Z	1
285	113T1852-1		.BOND ASSY	E,F,J ,L, N-Q,U ,W,Y	1
-290	113T1852-2		.BOND ASSY	G,H,K ,M, R-T,V ,X,Z	1

- Item Not Illustrated

# 57-26-22

ILLUSTRATED PARTS LIST

01.1

Page 1044

Nov 01/02